

List of pages in this Trip Kit

Trip Kit Index

Airport Information For OMSJ

Terminal Charts For OMSJ

Revision Letter For Cycle 02-2019

Change Notices

Notebook

General Information

Location: SHARJAH ARE
ICAO/IATA: OMSJ / SHJ
Lat/Long: N25° 19.75', E055° 30.97'
Elevation: 118 ft

Airport Use: Public
Daylight Savings: Not Observed
UTC Conversion: -4:00 = UTC
Magnetic Variation: 2.0° E

Fuel Types: 100 Octane (LL), Jet A-1
Repair Types: Minor Airframe, Minor Engine
Customs: Yes
Airport Type: IFR
Landing Fee: Yes
Control Tower: Yes
Jet Start Unit: No
LLWS Alert: No
Beacon: No

Sunrise: 0300 Z
Sunset: 1404 Z

Runway Information

Runway: 12
Length x Width: 13320 ft x 197 ft
Surface Type: asphalt
TDZ-Elev: 84 ft
Lighting: Edge, ALS, Centerline, REIL, TDZ
Displaced Threshold: 984 ft

Runway: 30
Length x Width: 13320 ft x 197 ft
Surface Type: asphalt
TDZ-Elev: 105 ft
Lighting: Edge, ALS, Centerline, REIL, TDZ
Displaced Threshold: 984 ft

Communication Information

ATIS: 122.400
Sharjah Tower: 118.600
Sharjah Ground: 121.875
Dubai Arrival: 124.900
Dubai Arrival: 120.250 Secondary
Dubai Arrival: 124.450

Dubai Departure: 120.250 Secondary

Dubai Departure: 126.200

Dubai Departure: 121.025

Dubai Departure: 126.025 Secondary

Dubai Direct (Approach Control Radar): 127.900

OMSJ/SHJ
SHARJAH INTL

JEPPESEN

25 JAN 19

10-1P

Eff 31 Jan

SHARJAH, UAE

AIRPORT BRIEFING

1. GENERAL

1.1. ATIS

ATIS 122.4

1.2. LOW VISIBILITY PROCEDURES (LVP)

1.2.1. GENERAL

LVP are in force, when RVR is 1500m or less and/or ceiling is 500' or less. Intersection departures during low visibility operations are not permitted. When LVP are in force, ACFT vacating the RWY shall report RWY vacated.

1.2.2. ARRIVAL - STANDARD TAXI ROUTES

After vacating the RWY, ACFT shall taxi via the published Standard LVP Taxi routes or as cleared by ATC.

1.2.3. DEPARTURE - STANDARD TAXI ROUTES

Taxi via the appropriate linking TWY (TWY Z2 to TWY Z15) or directly on to TWY A, then proceed direct to the CAT I/II holding points as cleared by ATC.

1.3. TAXI PROCEDURES

Code F ACFT movements are prohibited on rapid exit TWYs B7 and B11.

Code F ACFT will be allocated designated code-F-compliant parking stands.

ACFT A380 using stands 50 or 51 to hold short of TWY Z8.

ACFT type AN-225 are prohibited from turning from TWY Z2 to TWY A or from TWY A to TWY Z2 due to TWY radius.

TWY Z8 is a designated ACTF stand taxiline for Code F, MAX 25 KT during taxiing.

Code F ACFT to taxi with outboard engines on idle thrust at TWY Z8 to the cargo apron stand.

1.4. PARKING INFORMATION

ACFT arriving on stands 3 thru 8 should shutdown all engines before connecting to the fixed electrical ground power.

In case of APU failure, ACFT should shutdown LEFT side engines and contact SAS Operations on 129.6 (callsign: SHARJAH OPERATIONS) for further instructions.

ACFT parked on the Maintenance Apron, Maintenance/Service Areas to contact 129.6 for repositioning to relevant holding points prior to engine start.

Stand 50 is tow in/push out.

1.5. OTHER INFORMATION

Helipads as directed by ATC.

OMSJ/SHJ
SHARJAH INTL

JEPPESEN

25 JAN 19

10-1P1

Eff 31 Jan

SHARJAH, UAE

AIRPORT BRIEFING

2. ARRIVAL

2.1. GENERAL

Landing ACFT shall contact SAS Operations on 129.6 (callsign: SHARJAH OPERATIONS) prior to landing to confirm parking stand allocation or special request.

2.2. TAXI PROCEDURES

ACFT arriving at Maintenance/Service Areas shall hold at holding points Z4A or Z2/ZULU as directed by ATC, and will be towed to parking stand.

No left turn from TWY B7 on to TWY B.

No right turn from TWY B11 on to TWY B.

2.3. MINIMUM RWY OCCUPANCY TIME

Rapid exit from the RWY enables the achievement of maximum RWY utilization.

On exiting the RWY, pilots are reminded not to stop until the entire ACFT is clear of the RWY.

ACFT that cannot comply with these requirements are to notify ATC as soon as possible.

3. DEPARTURE

3.1. START-UP AND TAXI PROCEDURES

Contact SHARJAH Ground 10 minutes prior to start-up for ATC clearance and pass the following information:

- ACFT callsign;
- ACFT type;
- Parking stand;
- Destination;
- Requested flight level;
- ATIS letter and QNH.

If requesting an intersection departure, advise ATC at engine start.

ACFT leaving Maintenance/Service Areas shall be towed to holding point Z4A before engine start.

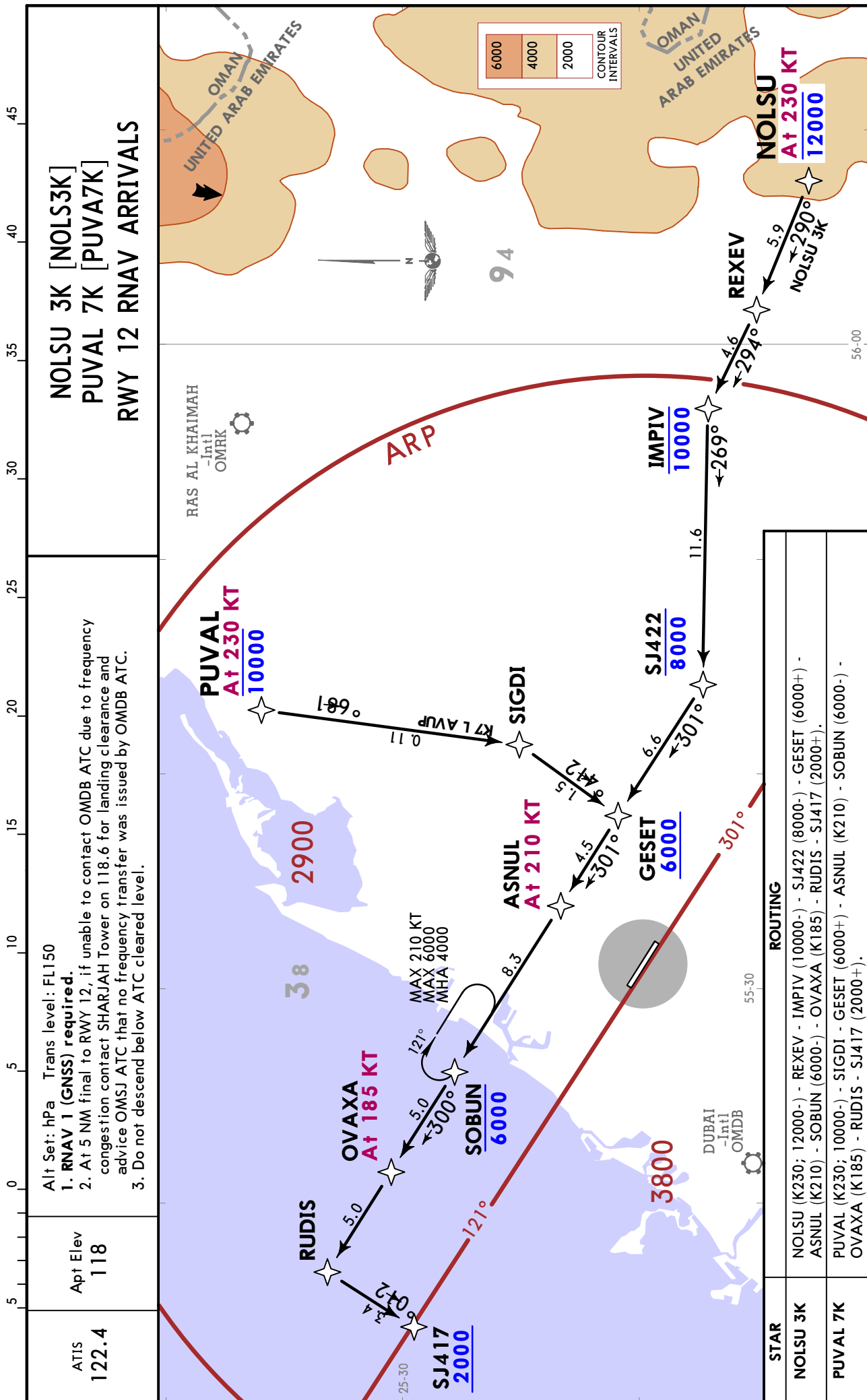
On receipt of line-up clearance, ACFT shall taxi to the correct position as soon as the preceding ACFT has commenced its take-off roll or landing run. Where possible, cockpit checks shall be completed prior to line-up. ACFT shall commence take-off roll immediately after take-off clearance is issued.

ACFT that cannot comply with these requirements are to notify ATC as soon as possible.

OMSJ/SHJ SHARJAH INTL

JEPPESSEN
18 MAY 18 10-2 Eff 24 May

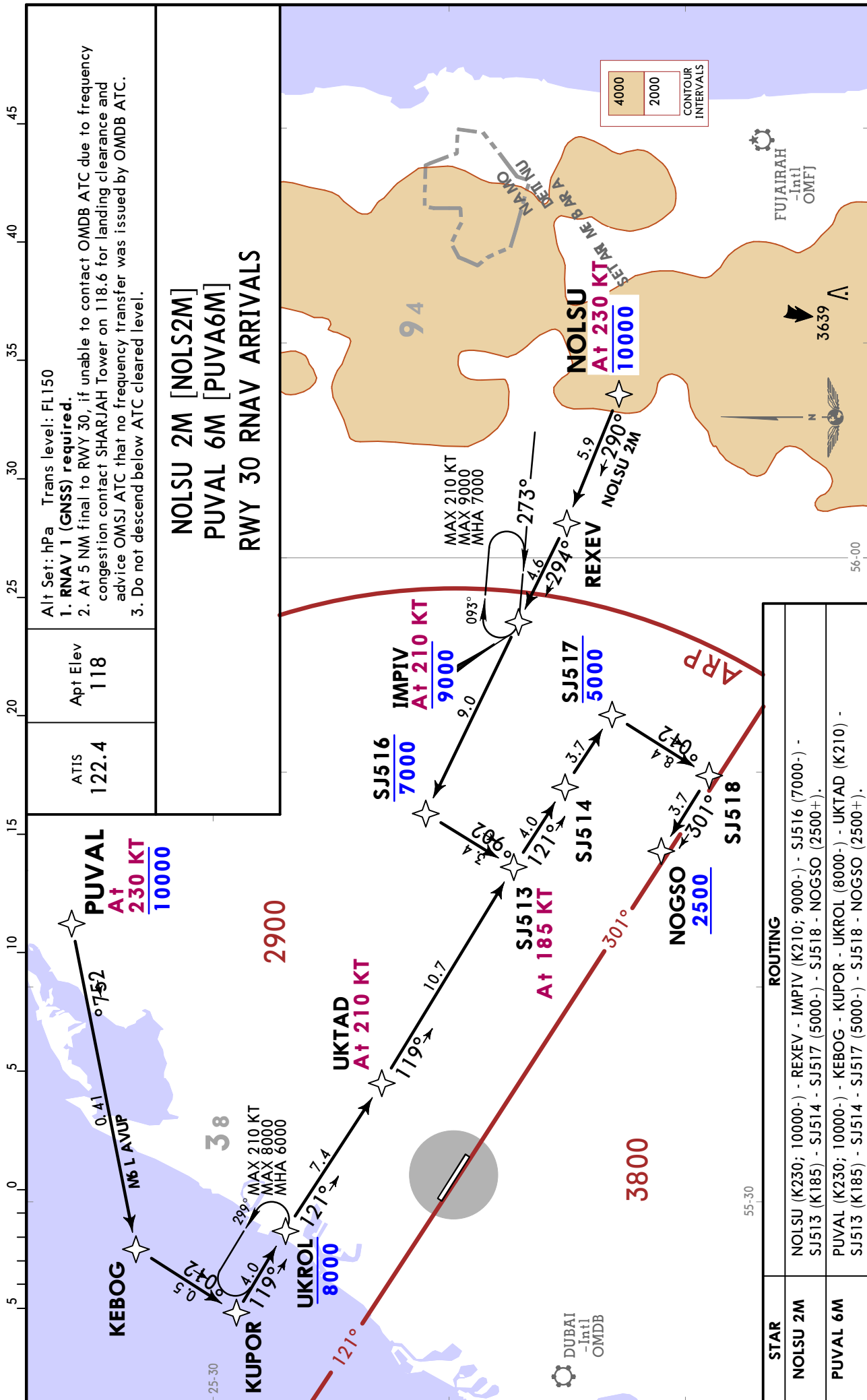
SHARJAH, UAE
RNAV STAR



OMSJ/SHJ
SHARJAH INTL

JEPPESSEN
18 MAY 18 **(10-2A)** Eff 24 May

SHARJAH, UAE
RNAV STAR

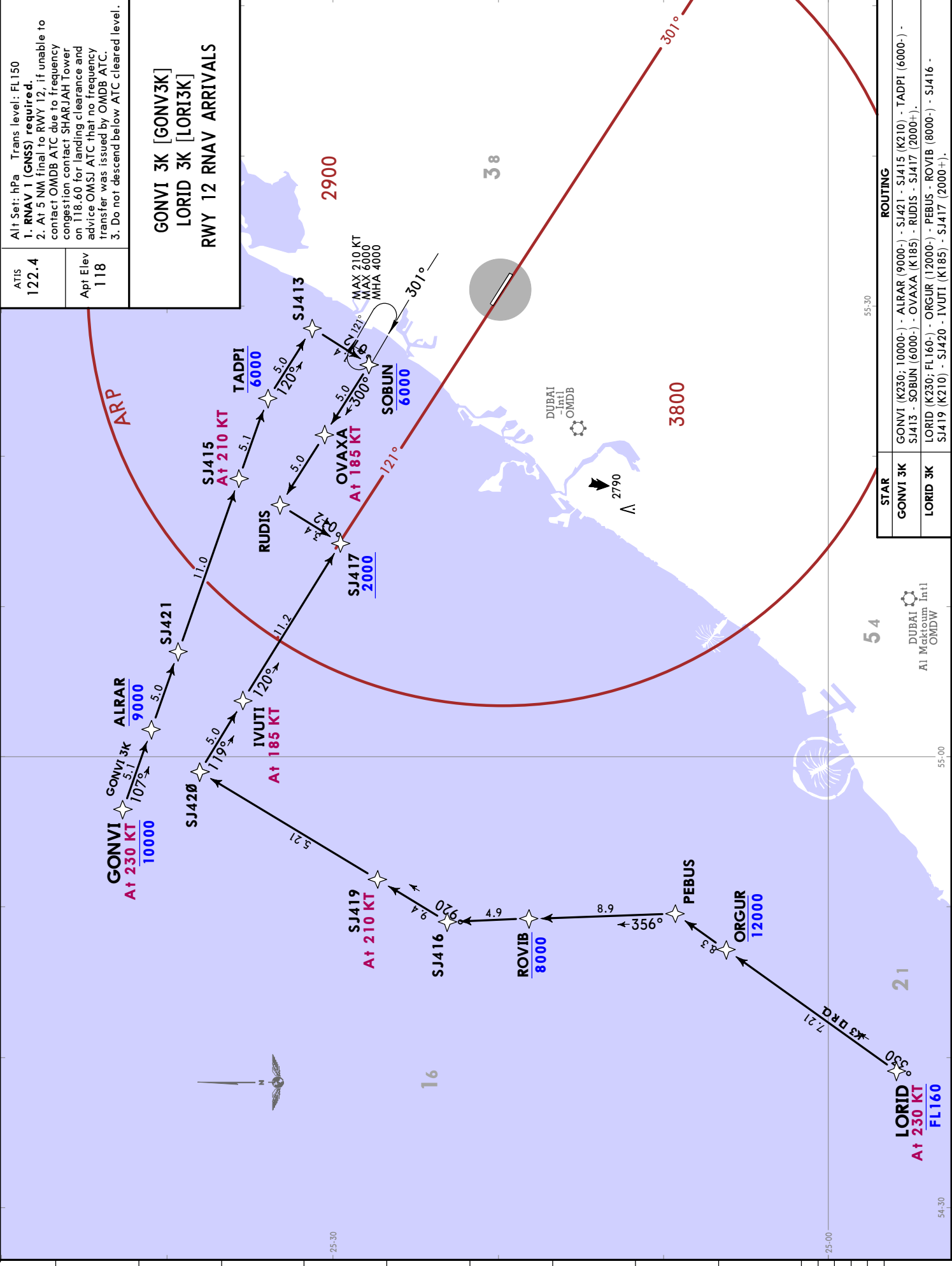


18 MAY 18 (10-2B) Eff 24 May RNAV STAR

OMSJ/SHJ SHARJAH INTL

Alt Set: hPa Trans level: FL150
 ATIS 122.4
 Apt Elev 118

GONVI 3K [GONV3K]
 LORID 3K [LORI3K]
 RWY 12 RNAV ARRIVALS



STAR	ROUTING
GONVI 3K	GONVI (K230; 10000-) - ALRAR (9000-) - SJ421 - SJ415 (K210) - TADPI (6000-) - SJ413 - SOBUN (6000-) - OVAXA (K185) - RUDIS - SJ417 (2000+)
LORID 3K	LORID (K230; FL160-) - ORGLUR (12000-) - PEBUS - ROVIB (8000-) - SJ416 - SJ419 (K210) - SJ420 - IVUTI (K185) - SJ417 (2000+)

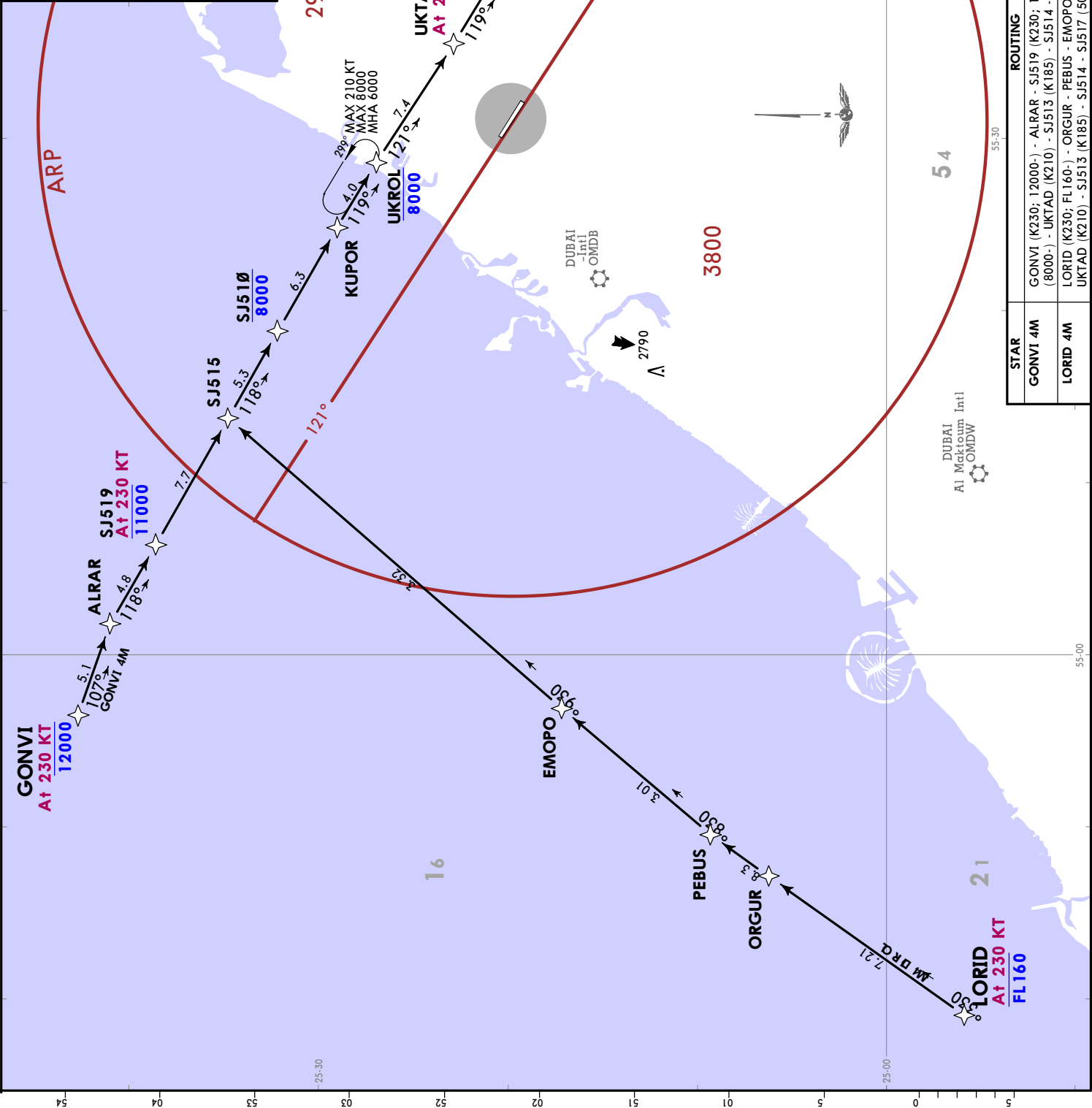
SHARJAH, UAE
RNAV STAR

JEPESEN
 18 MAY 18 10-2C Eff 24 May

OMSJ/SHJ
 SHARJAH INTL

Alt Set: hPa Trans level: FL150
 1. **RNAV 1 (GNSS) required.**
 2. At 5 NM final to RWY 30, if unable to contact OMDB ATC due to frequency congestion contact SHARJAH Tower on 118.60 for landing clearance and advice OMSJ ATC that no frequency transfer was issued by OMDB ATC.
 3. Do not descend below ATC cleared level.

**GONVI 4M [GONV4M]
 LORID 4M [LORI4M]
 RWY 30 RNAV ARRIVALS**



STAR	ROUTING
GONVI 4M	GONVI (K230; 12000-) - ALRAR - SJ519 (K230; 11000-) - SJ515 - SJ510 (8000-) - KUPOR - UKROL (8000-) - UKTAD (K210) - SJ513 (K185) - SJ514 - SJ517 (5000-) - SJ518 - NOGSO (2500+).
LORID 4M	LORID (K230; FL160-) - ORGUR - PEBUS - EMOPO - SJ515 - SJ510 (8000-) - KUPOR - UKROL (8000-) - UKTAD (K210) - SJ513 (K185) - SJ514 - SJ517 (5000-) - SJ518 - NOGSO (2500+).

OMSJ/SHJ
SHARJAH INTL

JEPPESSEN

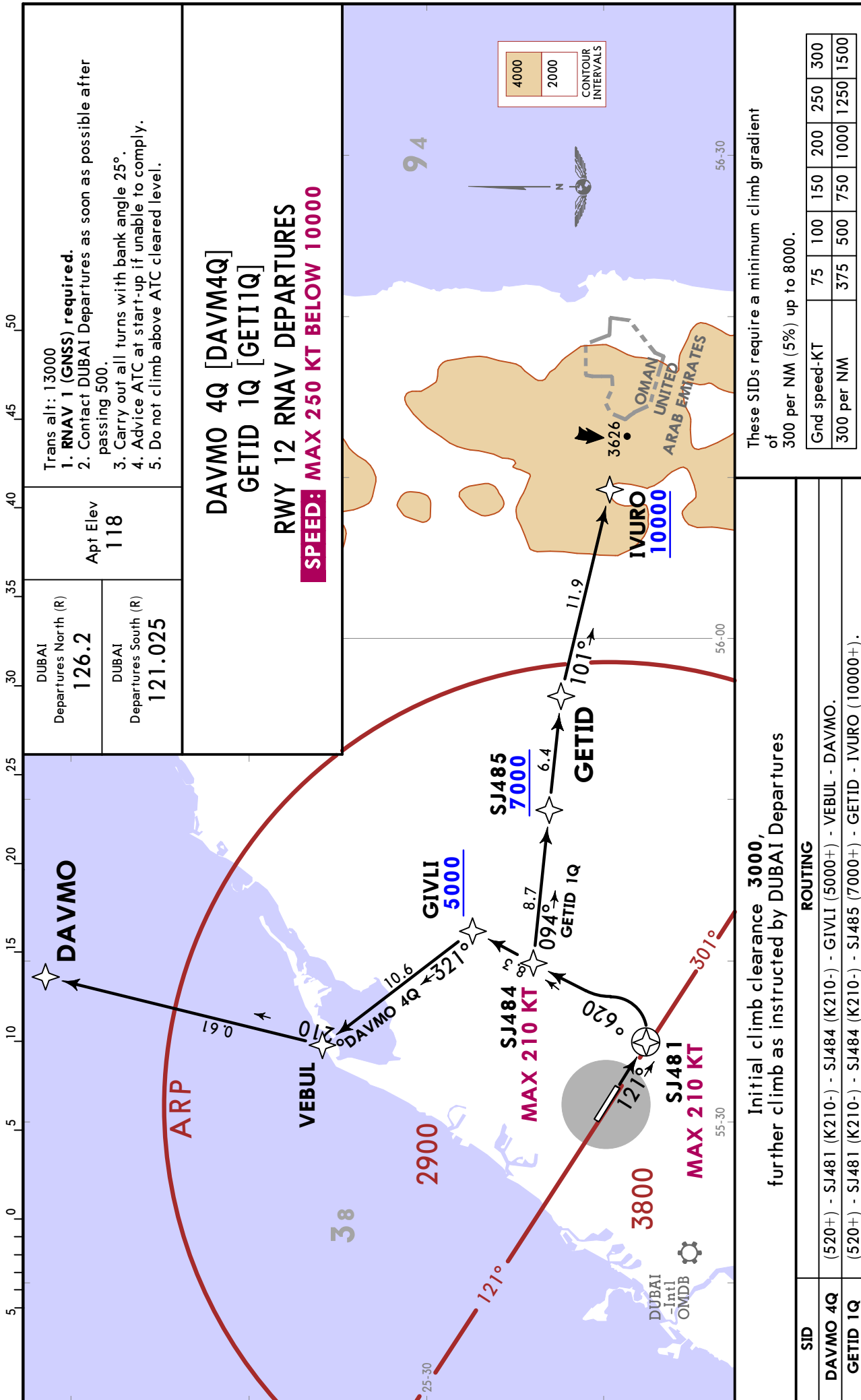
SHARJAH, UAE

18 MAY 18

10-3

Eff 24 May

RNAV SID



OMSJ/SHJ
SHARJAH INTL

JEPPESSEN

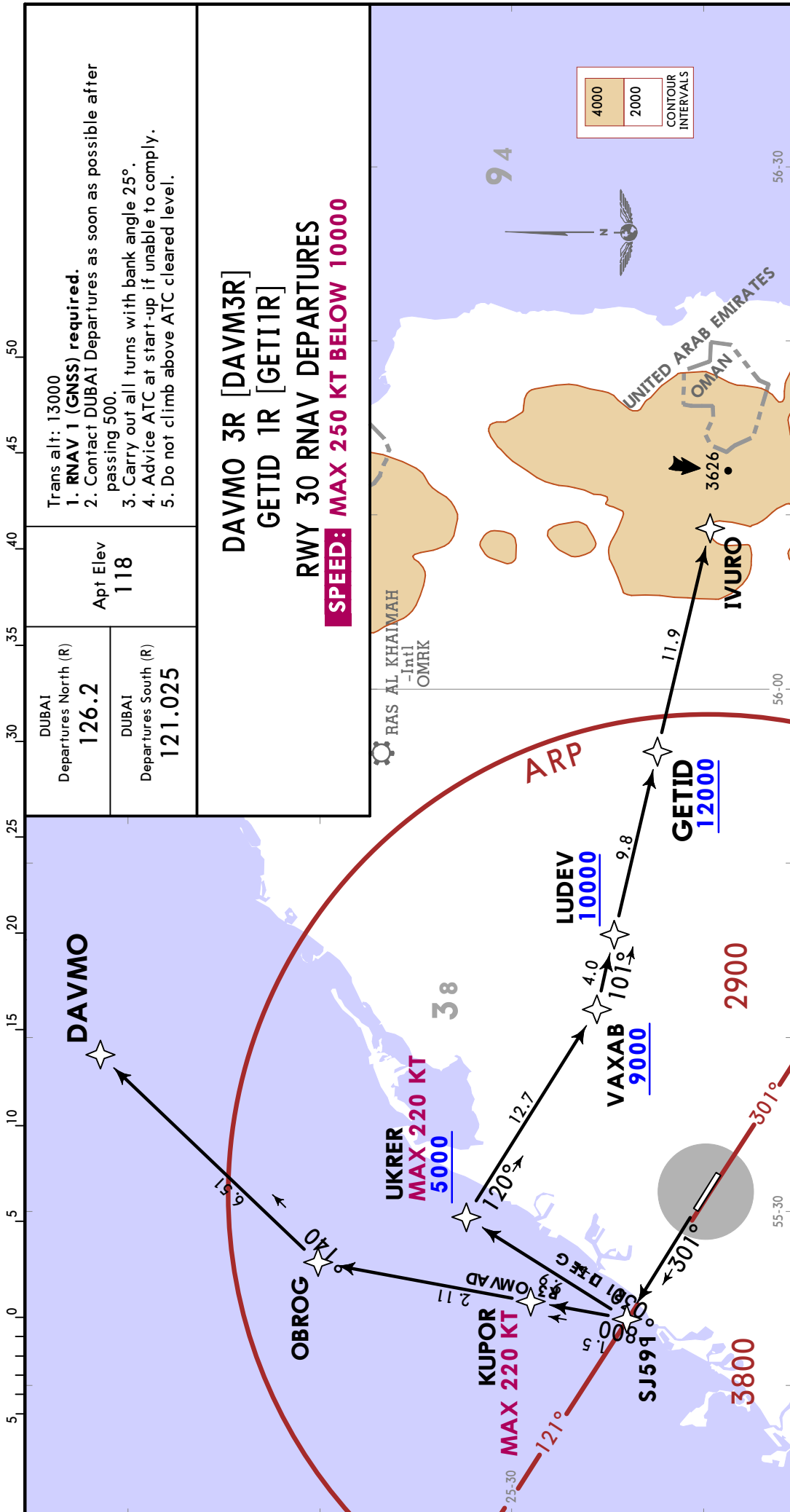
SHARJAH, UAE

18 MAY 18

10-3A

Eff 24 May

RNAV SID



Trans alt: 13000
1. RNAV 1 (GNSS) required.
 2. Contact DUBAI Departures as soon as possible after passing 500.
 3. Carry out all turns with bank angle 25°.
 4. Advise ATC at start-up if unable to comply.
 5. Do not climb above ATC cleared level.

DUBAI Departures North (R) **126.2**
 DUBAI Departures South (R) **121.025**
 Apt Elev **118**

**DAVMO 3R [DAVM3R]
 GETID 1R [GETI1R]
 RWY 30 RNAV DEPARTURES**
SPEED: MAX 250 KT BELOW 10000

These SIDs require a minimum climb gradient of 300 per NM (5%) up to 8000.

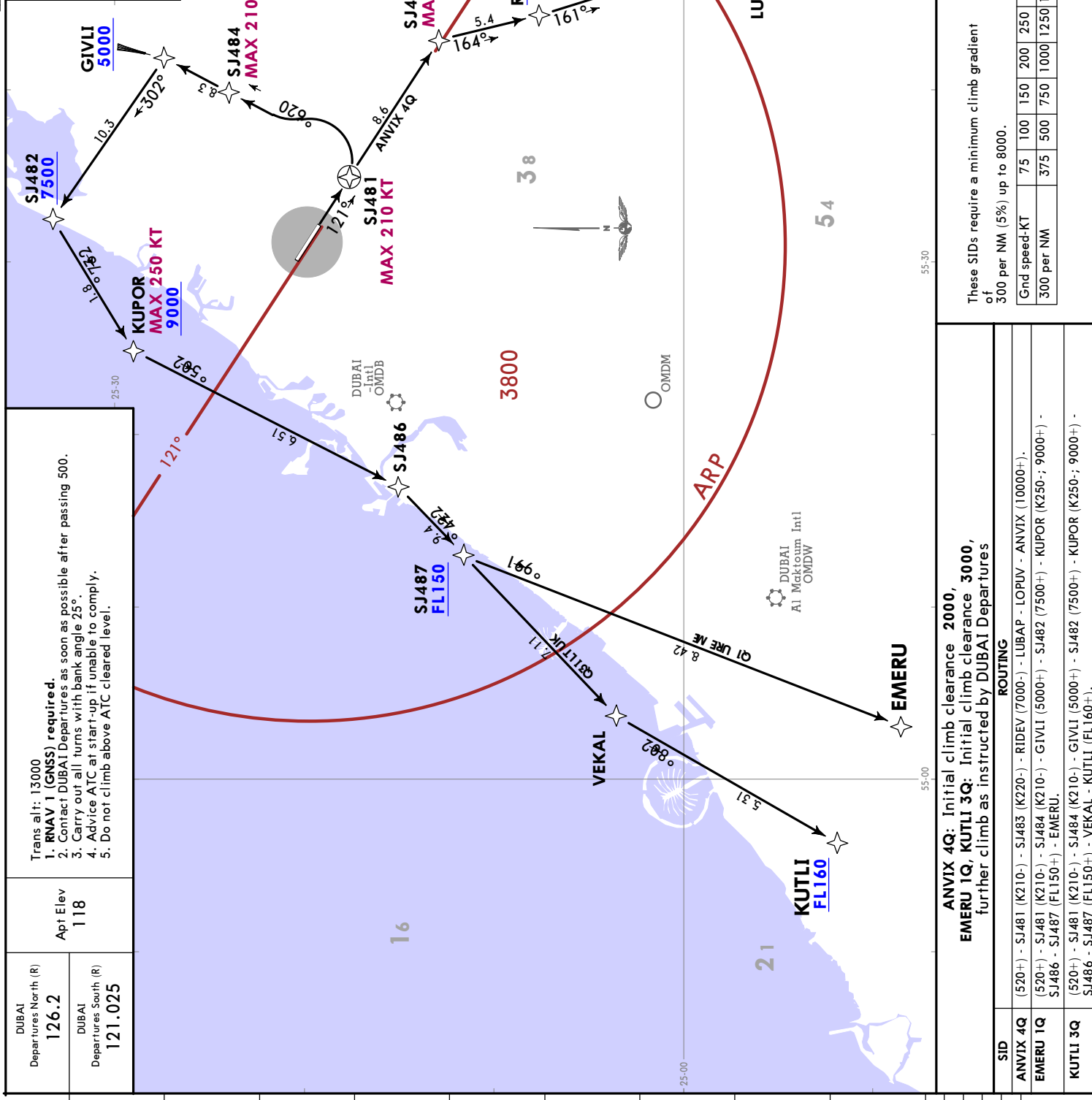
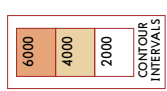
Grnd speed-KT	75	100	150	200	250	300
300 per NM	375	500	750	1000	1250	1500

Initial climb clearance **3000**, further climb as instructed by DUBAI Departures

SID	ROUTING
DAVMO 3R	(520+) - SJ591 - KUPOR (K220-) - OBROG - DAVMO.
GETID 1R	(520+) - SJ591 - UKRER (K220+; 5000+) - VAXAB (9000+) - LUDEV (10000+) - GETID (12000+) - IVURO.

JEPPESEN SHARJAH, UAE
 18 MAY 18
 Eff 24 May
 10-3B
RNAV SID

ANVIX 4Q [ANV14Q]
EMERU 1Q [EMER 1Q]
KUTLI 3Q [KUTL3Q]
RWY 12 RNAV DEPARTURES
SPEED: MAX 250 KT BELOW 10000



Trans alt: 13000
 1. **RNAV 1 (GNSS) required.**
 2. Contact DUBAI Departures as soon as possible after passing 500.
 3. Carry out all turns with bank angle 25°.
 4. Advise ATC at start-up if unable to comply.
 5. Do not climb above ATC cleared level.

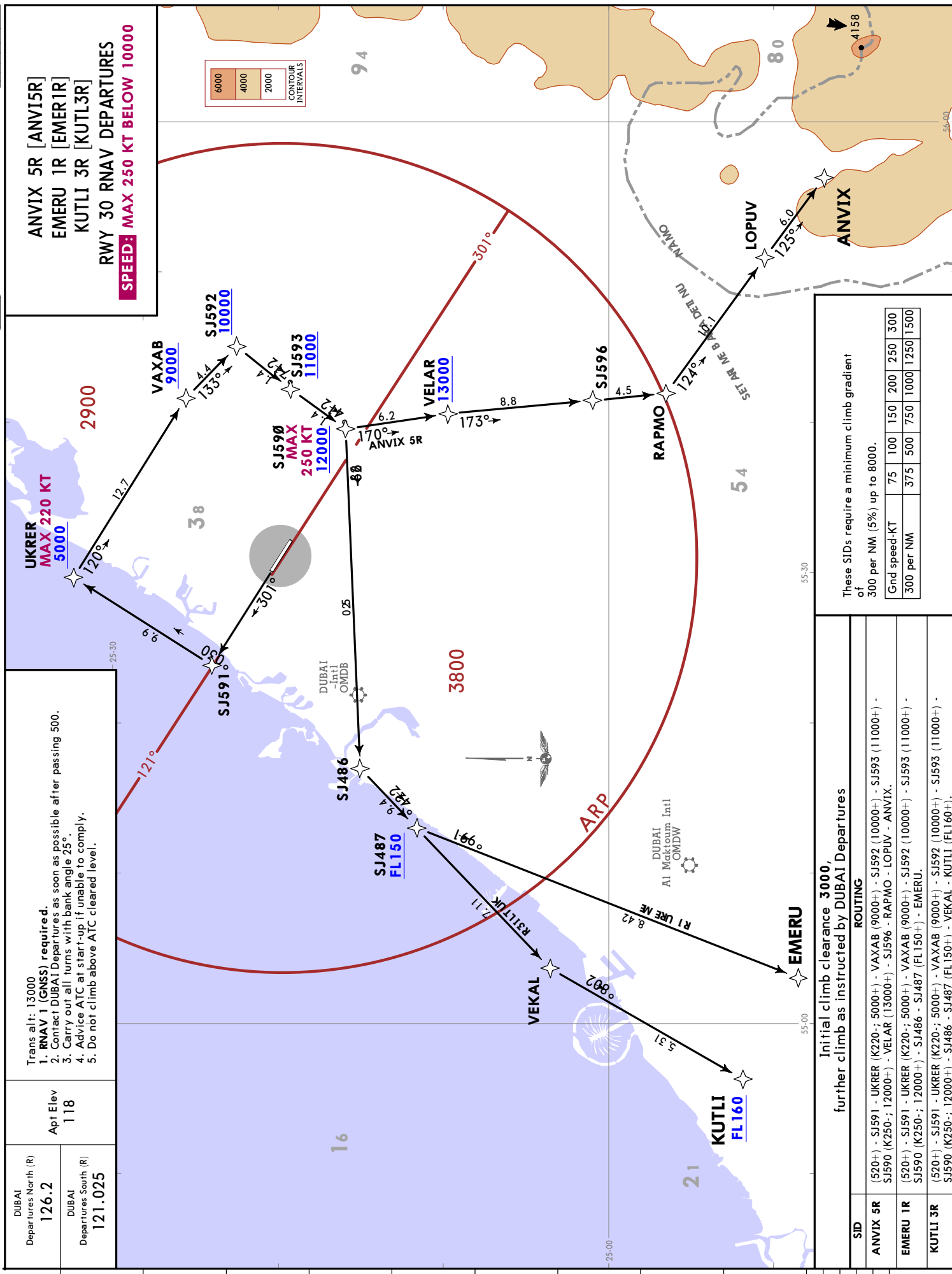
DUBAI Departures North (R)	126.2
DUBAI Departures South (R)	121.025
Apt Elev	118

These SIDs require a minimum climb gradient of 300 per NM (5% up to 8000).

Grnd speed-KT	75	100	150	200	250	300
300 per NM	375	500	750	1000	1250	1500

ROUTING

ANVIX 4Q	(520+) - SJ481 (K210-) - SJ483 (K220-) - RIDEV (7000+) - LUBAP - LOPUV - ANVIX (10000+).
EMERU 1Q	(520+) - SJ481 (K210-) - SJ484 (K210-) - GIVLI (5000+) - SJ482 (7500+) - KUPOR (K250+; 9000+) - SJ486 - SJ487 (FL150+) - EMERU.
KUTLI 3Q	(520+) - SJ481 (K210-) - SJ484 (K210-) - GIVLI (5000+) - SJ482 (7500+) - KUPOR (K250+; 9000+) - SJ486 - SJ487 (FL150+) - VEKAL - KUTLI (FL160+).



DUBAI Departures North (R)	126.2
DUBAI Departures South (R)	121.025
Apt. Elev	118

These SIDs require a minimum climb gradient of 300 per NM (5% up to 8000).

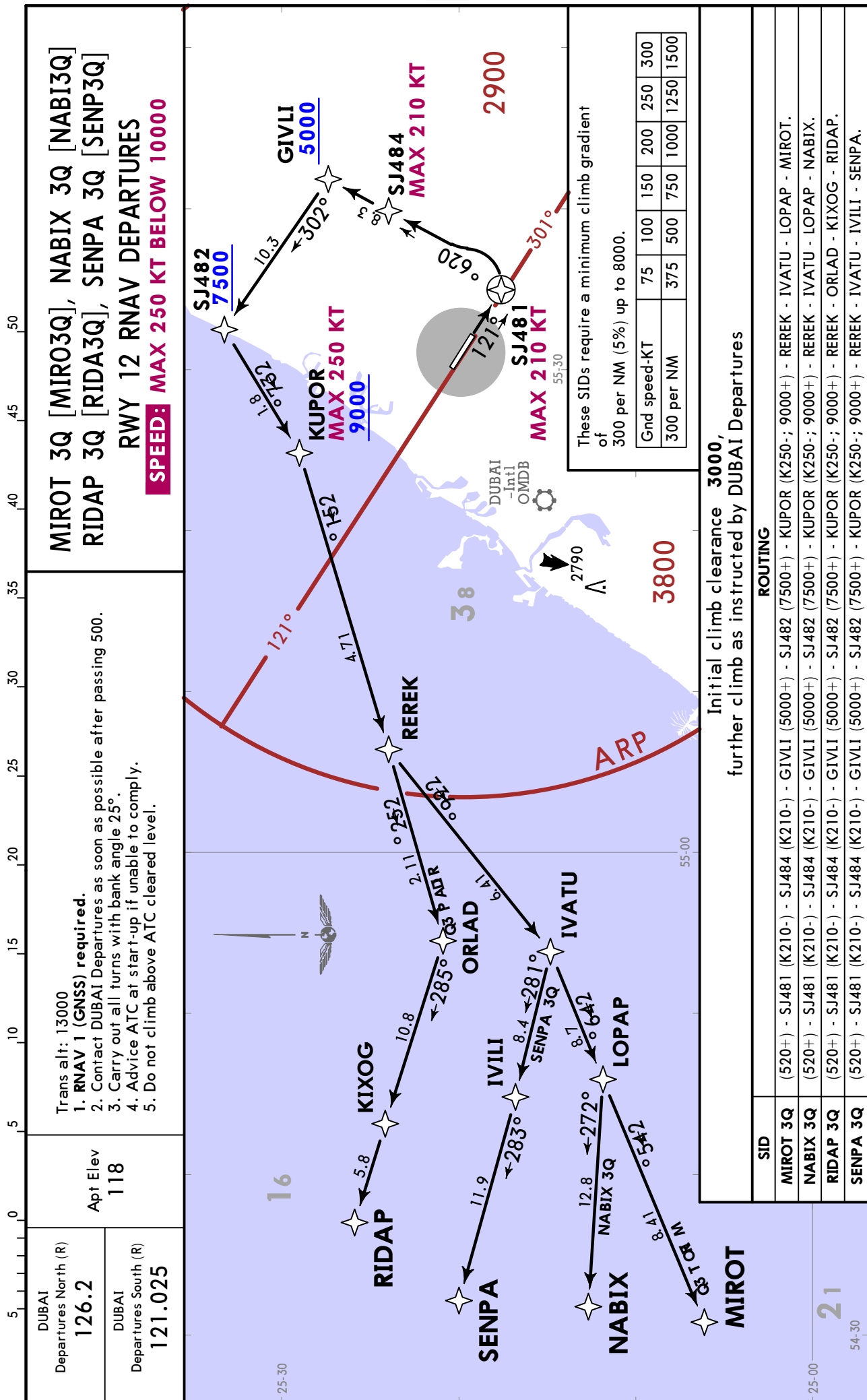
Gnd speed-KT	75	100	150	200	250	300
300 per NM	375	500	750	1000	1250	1500

Initial climb clearance 3000, further climb as instructed by DUBAI Departures	
SID	ROUTING
ANVIX 5R	(520+)-SJ591-UKRER (K220; 5000+)-VAXAB (9000+)-SJ592 (10000+)-SJ593 (11000+)-SJ590 (K250; 12000+)-VELAR (13000+)-SJ596-RAPMO-LOPUV-ANVIX.
EMERU 1R	(520+)-SJ591-UKRER (K220; 5000+)-VAXAB (9000+)-SJ592 (10000+)-SJ593 (11000+)-SJ590 (K250; 12000+)-SJ486-SJ487 (FL150+)-EMERU.
KUTLI 3R	(520+)-SJ591-UKRER (K220; 5000+)-VAXAB (9000+)-SJ592 (10000+)-SJ593 (11000+)-SJ590 (K250; 12000+)-SJ486-SJ487 (FL150+)-VEKAL-KUTLI (FL160+).

OMSJ/SHJ
SHARJAH INTL

JEPPESSEN
18 MAY 18 **10-3D** Eff 24 May

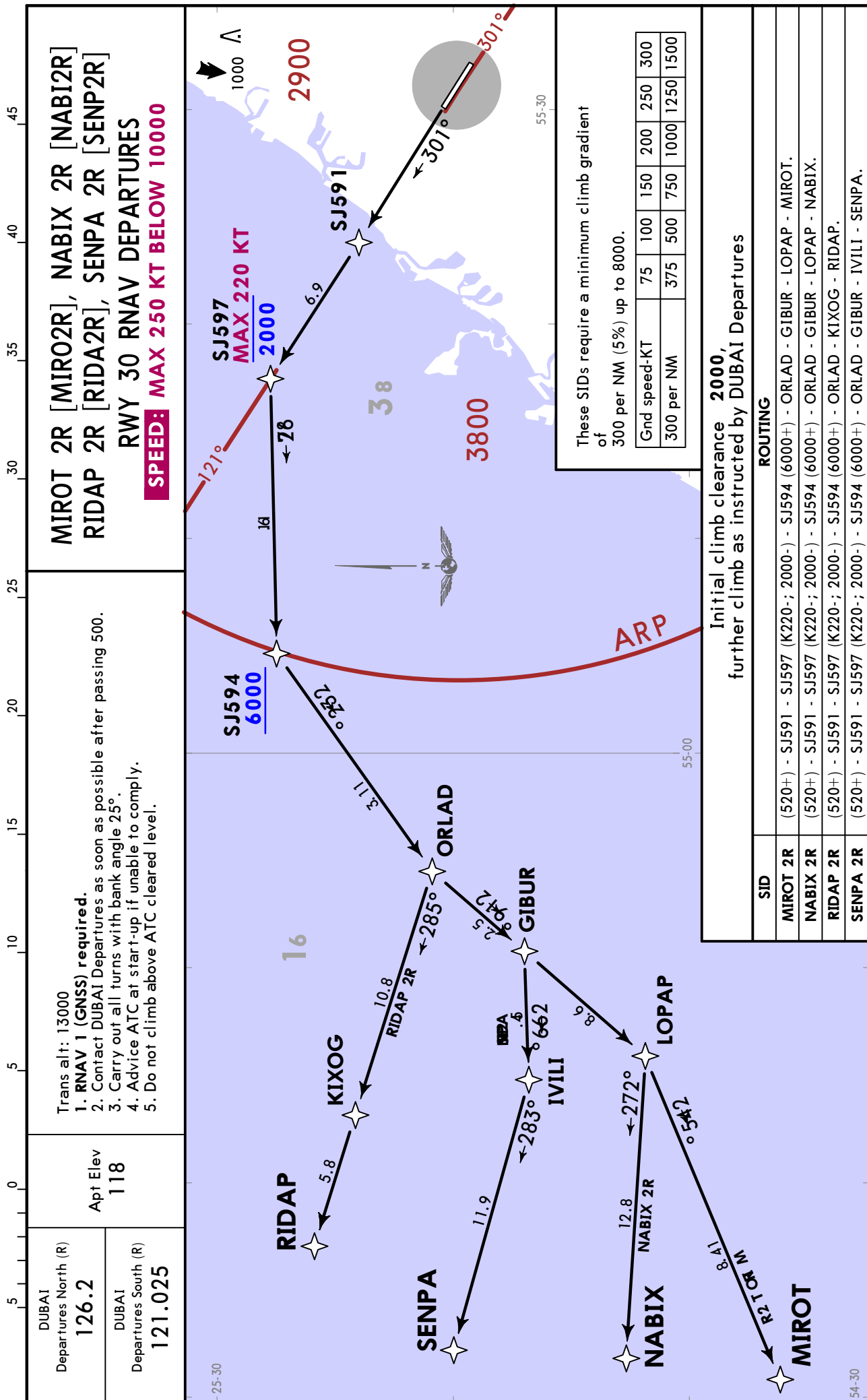
SHARJAH, UAE
RNAV SID



OMSJ/SHJ
SHARJAH INTL

JEPPESSEN
18 MAY 18 **10-3E** Eff 24 May

SHARJAH, UAE
RNAV SID

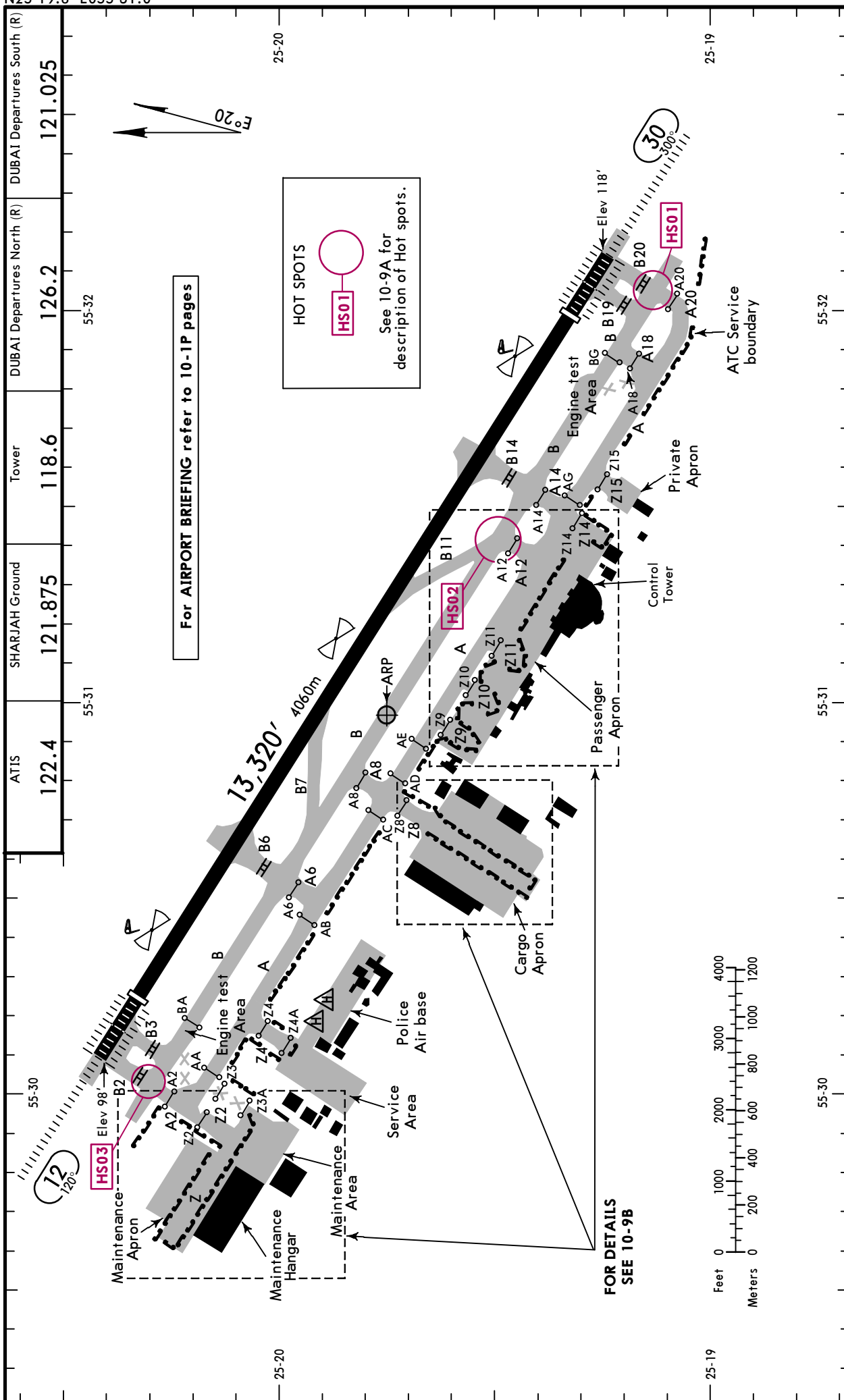


CHANGES: RNAV SIDs renumbered; crossing altitude over SJ594 revised.

OMSJ/SHJ
Apt Elev **118'**
N25 19.8 E055 31.0

JEPPESSEN
31 AUG 18 **(10-9)** Eff 13 Sep

SHARJAH, UAE
SHARJAH INTL



CHANGES: Hot spots added. Taxiway Z3 closed.

© JEPPESSEN, 2014, 2018. ALL RIGHTS RESERVED.

OMSJ/SHJ



SHARJAH, UAE

31 AUG 18 (10-9A) Eff 13 Sep

SHARJAH INTL

ADDITIONAL RUNWAY INFORMATION						
RWY			USABLE LENGTHS		TAKE-OFF	WIDTH
			LANDING Threshold	BEYOND Glide Slope		
12 30	HIRL(60m) CL(15m) HIALS-II REIL TDZ PAPI(3.0°) RVR	12,333'	3759m	11,179'	3407m	197'
				11,239'	3426m	60m

1 TAKE-OFF RUN AVAILABLE

RWY 12:

From rwy head 13,314' (4058m)
 twy B3 int 12,867' (3922m)
 twy B6 int 9879' (3011m)

RWY 30:

From rwy head 13,314' (4058m)
 twy B19 int 12,923' (3939m)
 twy B14 int 10,013' (3052m)

HOT SPOTS

(For information only, not to be construed as ATC instructions.)

- HS01** Do not line up on TWY B during departure.
 Note: TWY B is 197'/60m wide and can be confused with the RWY.
- HS02** After vacating RWY via TWY B11, no immediate RIGHT turn.
 Continue STRAIGHT AHEAD and vacate via TWY A14.
- HS03** Do not line up on TWY B during departure.
 Note: TWY B is 197'/60m wide and can be confused with the RWY.

Standard

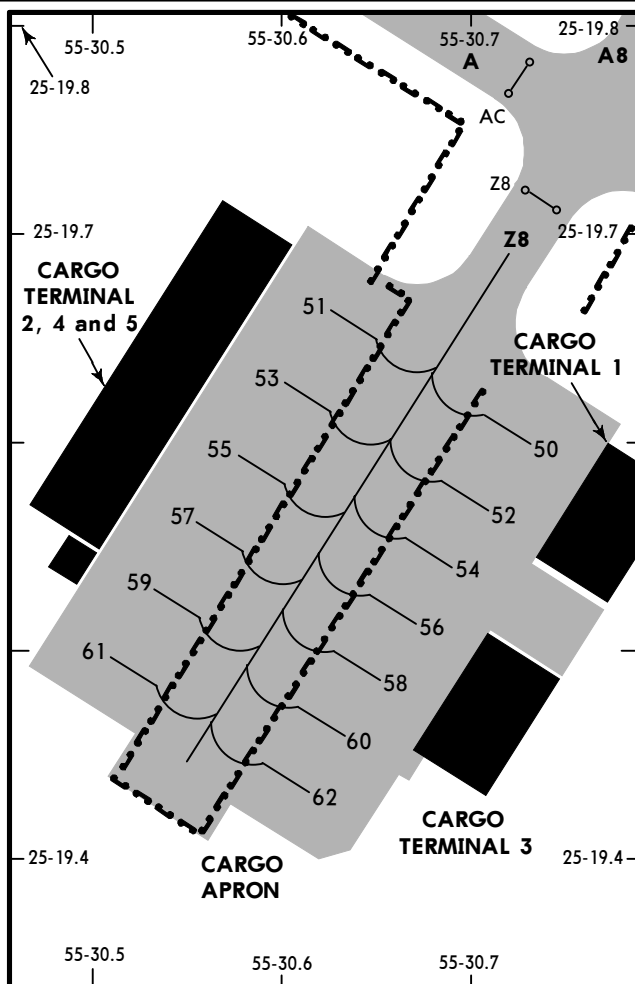
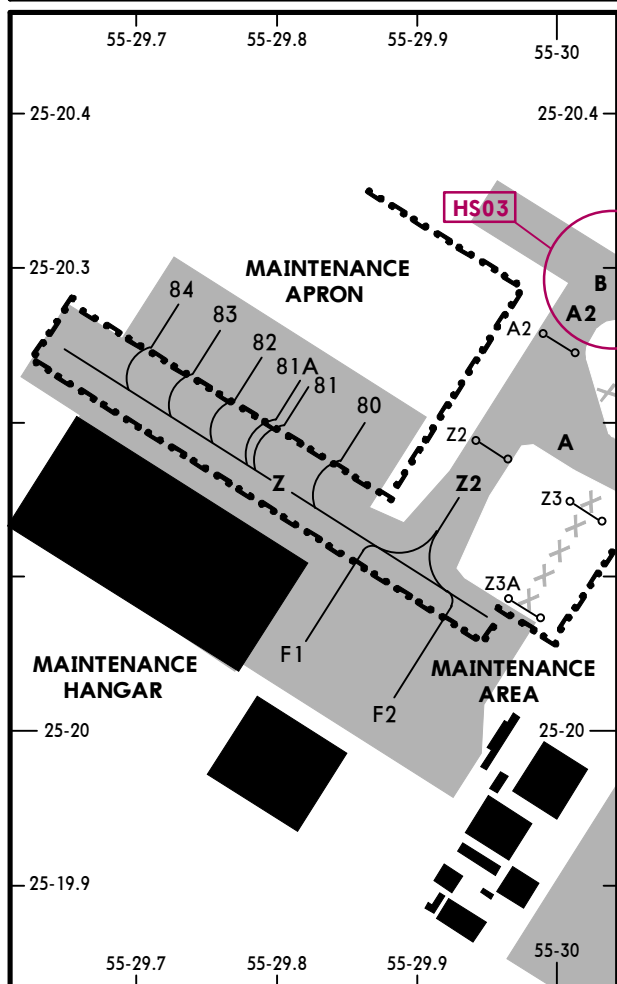
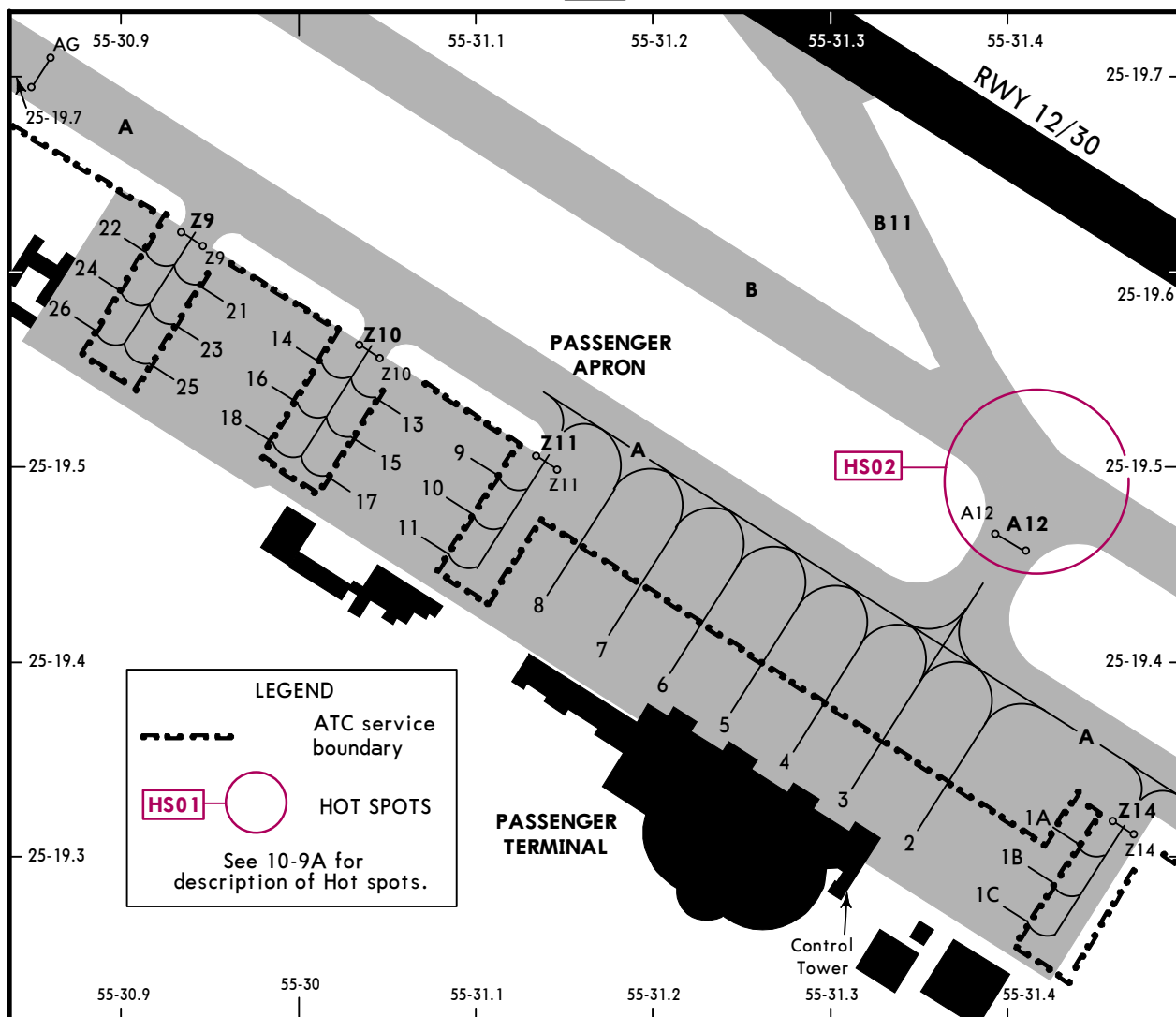
TAKE-OFF

	Low Visibility Take-off			Day: RL & RCLM Night: RL or CL	Day: RL or RCLM Night: RL or CL	Adequate vis ref (Day only)
	HIRL, CL & relevant RVR	RL, CL & relevant RVR	RL & CL			
A	350m			400m	500m	
B						
C						
D						

OMSJ/SHJ

JEPESEN
31 AUG 18 **10-9B** Eff 13 Sep

SHARJAH, UAE
SHARJAH INTL



CHANGES: Hot spots added. Taxiway Z3 closed.

© JEPESEN, 1999, 2018. ALL RIGHTS RESERVED.

OMSJ/SHJ

 **JEPPESEN**
 31 AUG 18 (10-9C) Eff 13 Sep

SHARJAH, UAE
 SHARJAH INTL

INS COORDINATES			
STAND No.	COORDINATES	STAND No.	COORDINATES
1A thru 1C	N25 19.3 E055 31.4	56	N25 19.5 E055 30.7
2 thru 4	N25 19.3 E055 31.3	57	N25 19.6 E055 30.6
5 thru 7	N25 19.4 E055 31.2	58	N25 19.5 E055 30.6
8	N25 19.4 E055 31.1	59	N25 19.5 E055 30.5
9 thru 13	N25 19.5 E055 31.1	60	N25 19.5 E055 30.6
14	N25 19.6 E055 31.0	61	N25 19.5 E055 30.5
15	N25 19.5 E055 31.1	62	N25 19.4 E055 30.6
16 thru 18	N25 19.5 E055 31.0	80	N25 20.2 E055 29.9
21	N25 19.6 E055 31.0	81 thru 82	N25 20.2 E055 29.8
22	N25 19.6 E055 30.9	83	N25 20.3 E055 29.8
23	N25 19.6 E055 31.0	84	N25 20.3 E055 29.7
24	N25 19.6 E055 30.9	F1	N25 20.0 E055 29.8
25	N25 19.5 E055 30.9	F2	N25 20.0 E055 29.9
26	N25 19.6 E055 30.9		
50	N25 19.6 E055 30.7		
51	N25 19.7 E055 30.6		
52	N25 19.6 E055 30.7		
53	N25 19.6 E055 30.6		
54	N25 19.5 E055 30.7		
55	N25 19.6 E055 30.6		

OMSJ/SHJ

JEPPESEN

SHARJAH, UAE

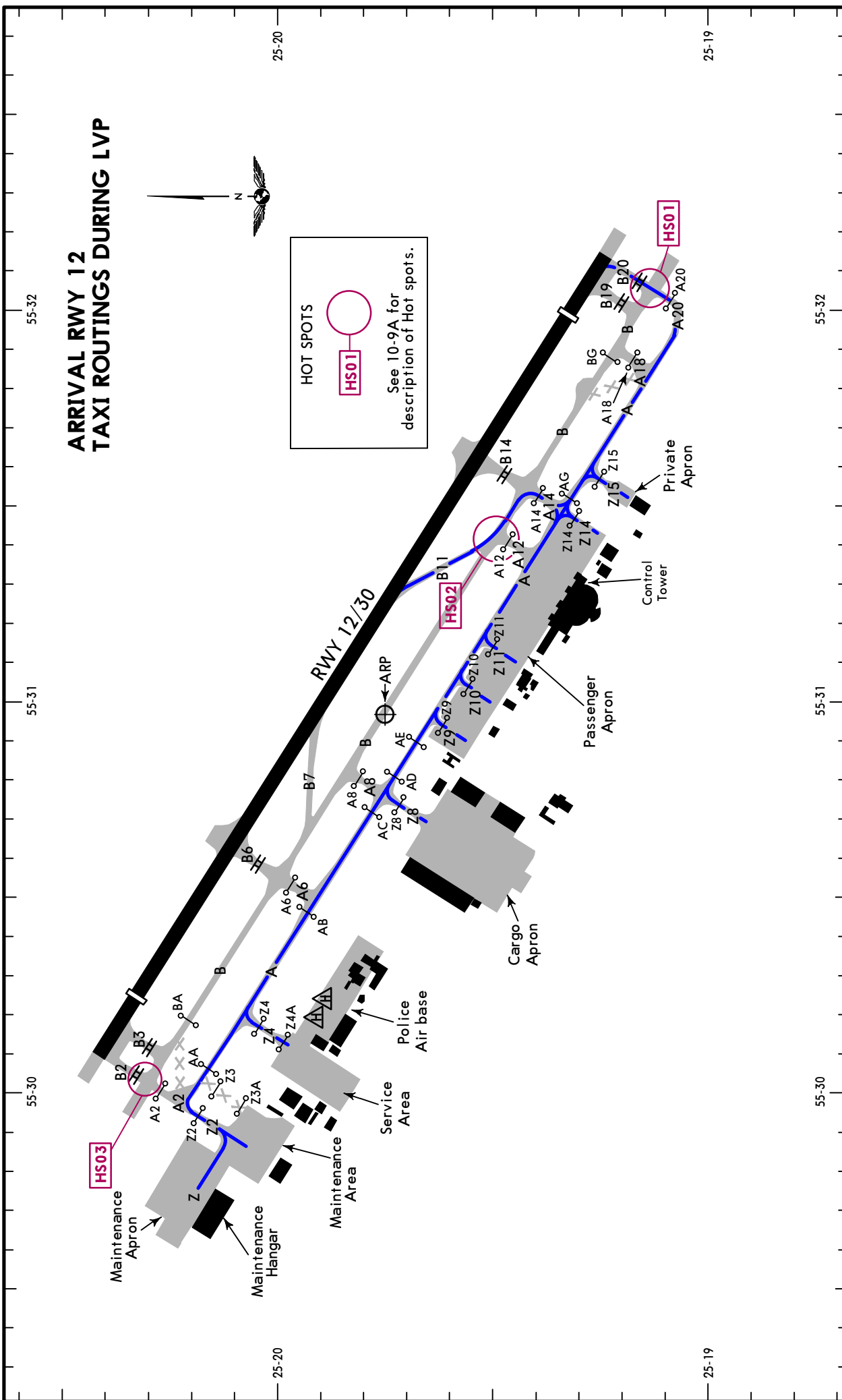
31 AUG 18

10-9D

Eff 13 Sep

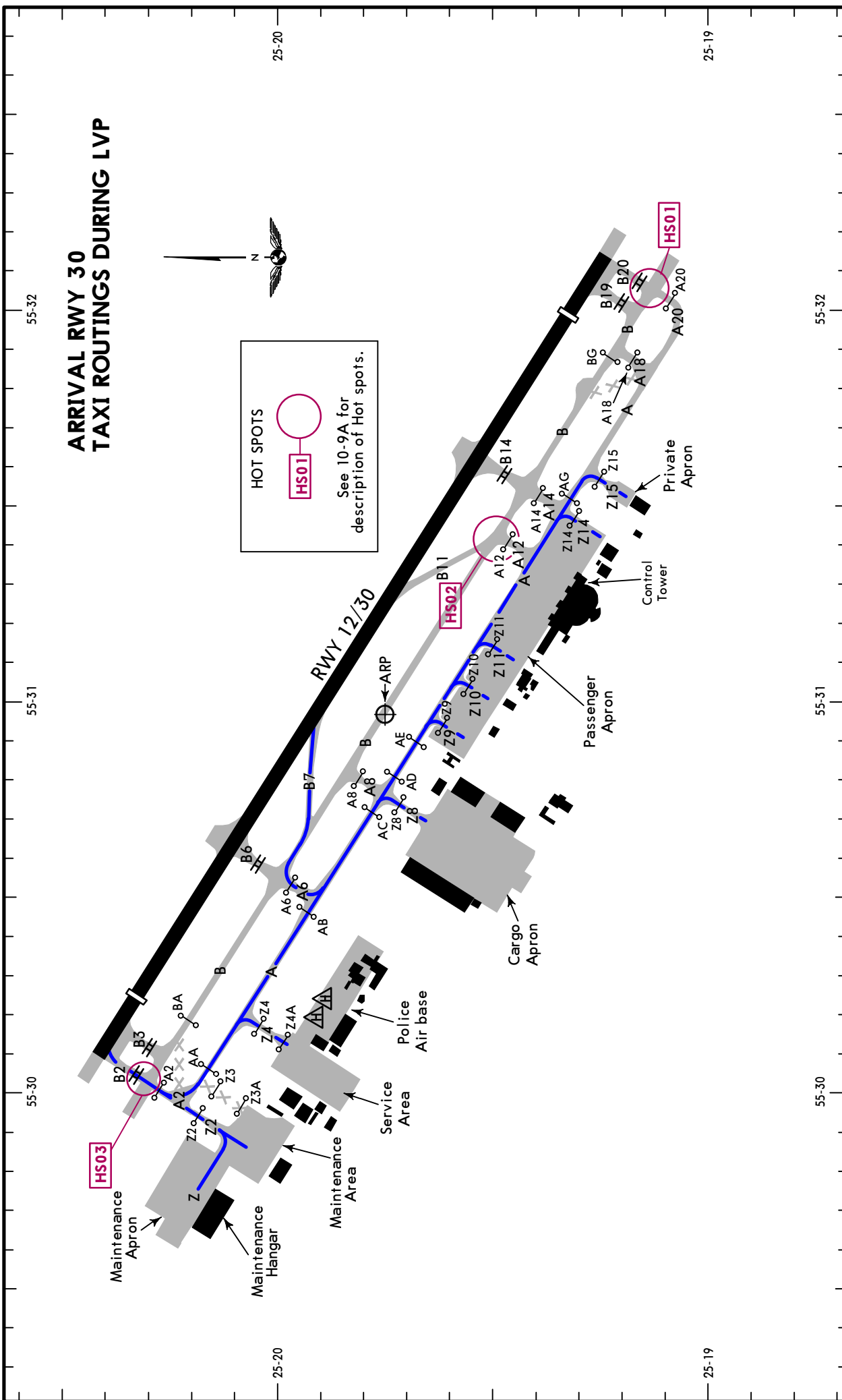
SHARJAH INTL

ARRIVAL RWY 12 TAXI ROUTINGS DURING LVP

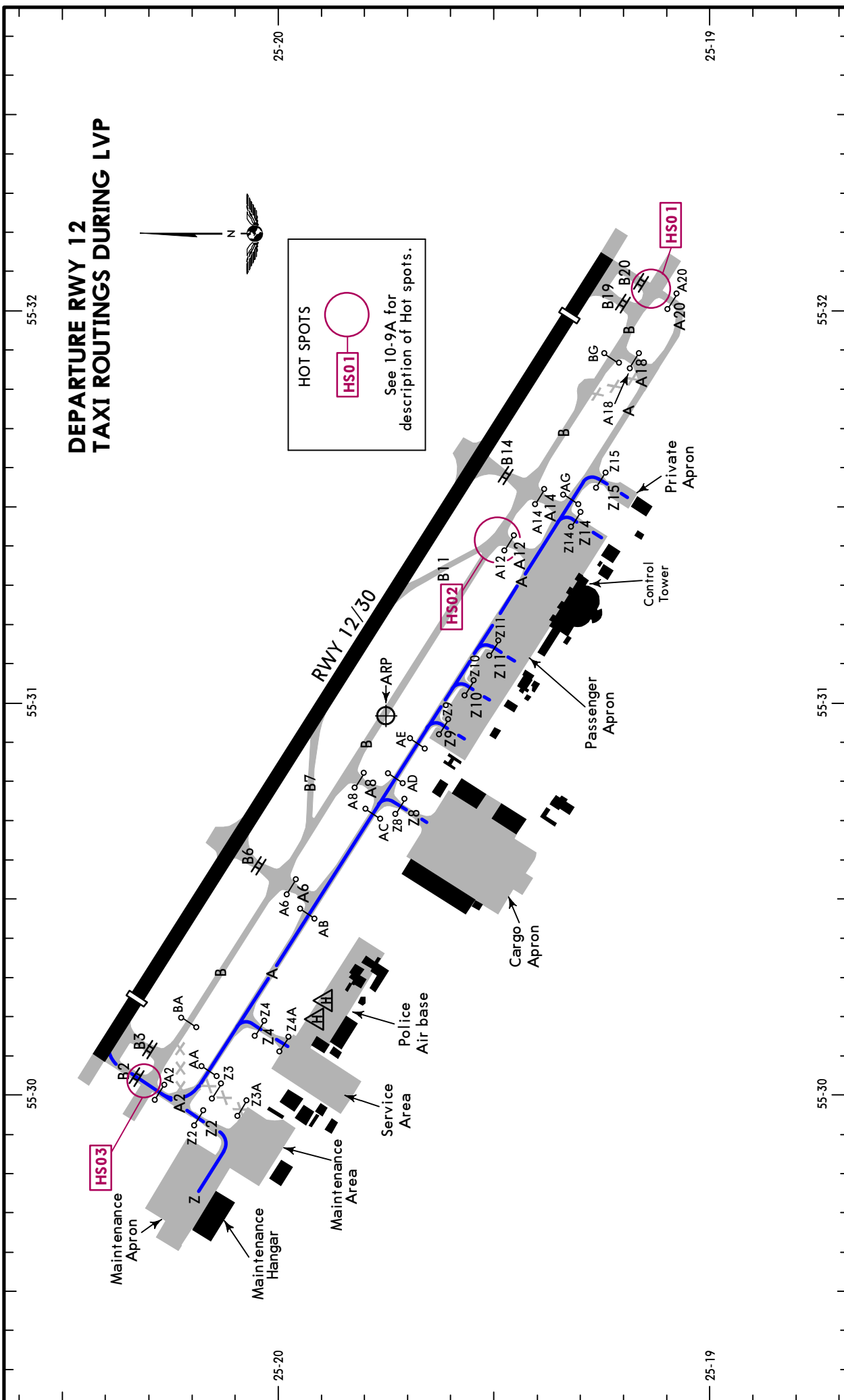


CHANGES: Hot spots added. Taxiway Z3 closed.

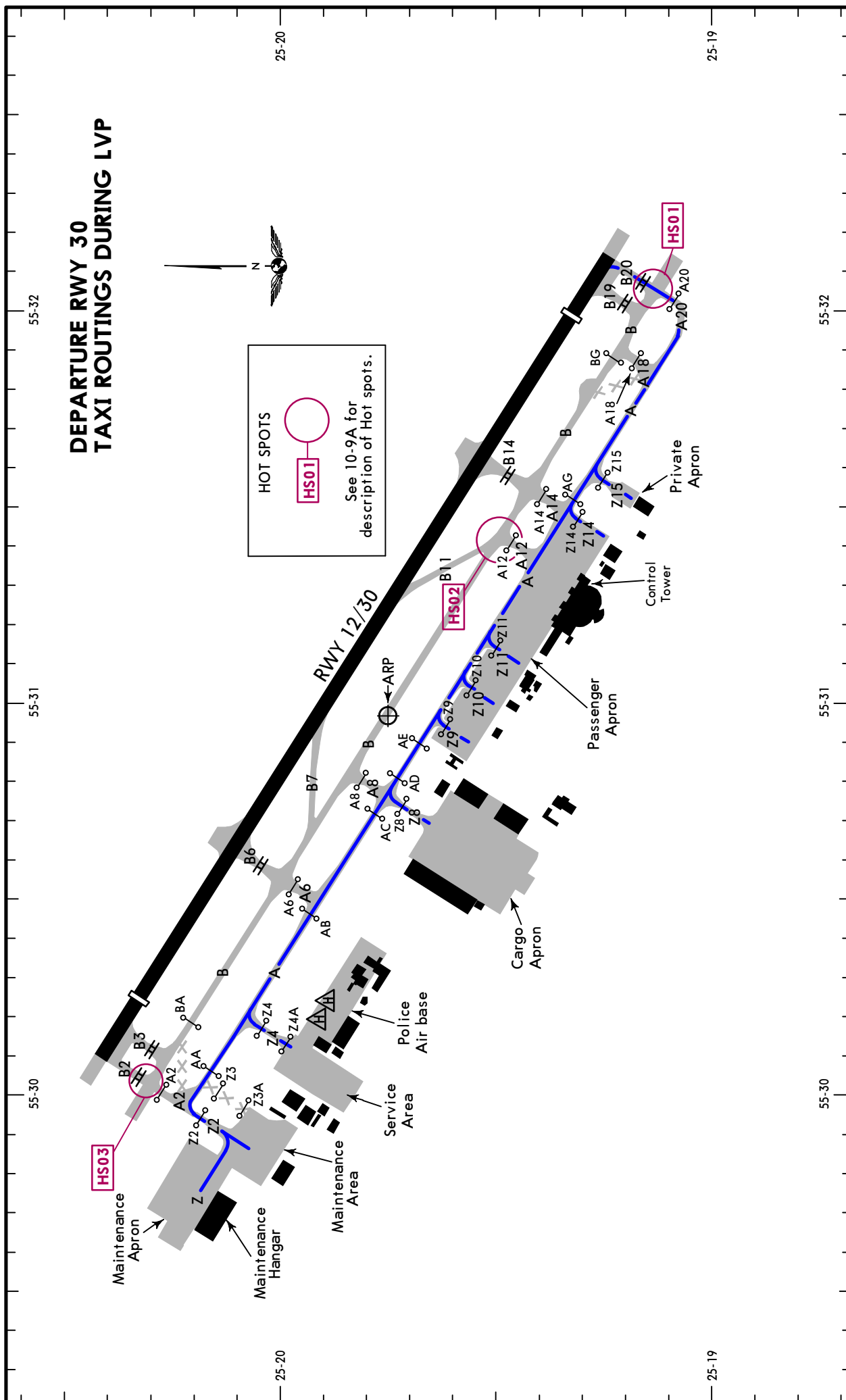
ARRIVAL RWY 30
TAXI ROUTINGS DURING LVP




DEPARTURE RWY 12
TAXI ROUTINGS DURING LVP



DEPARTURE RWY 30
TAXI ROUTINGS DURING LVP



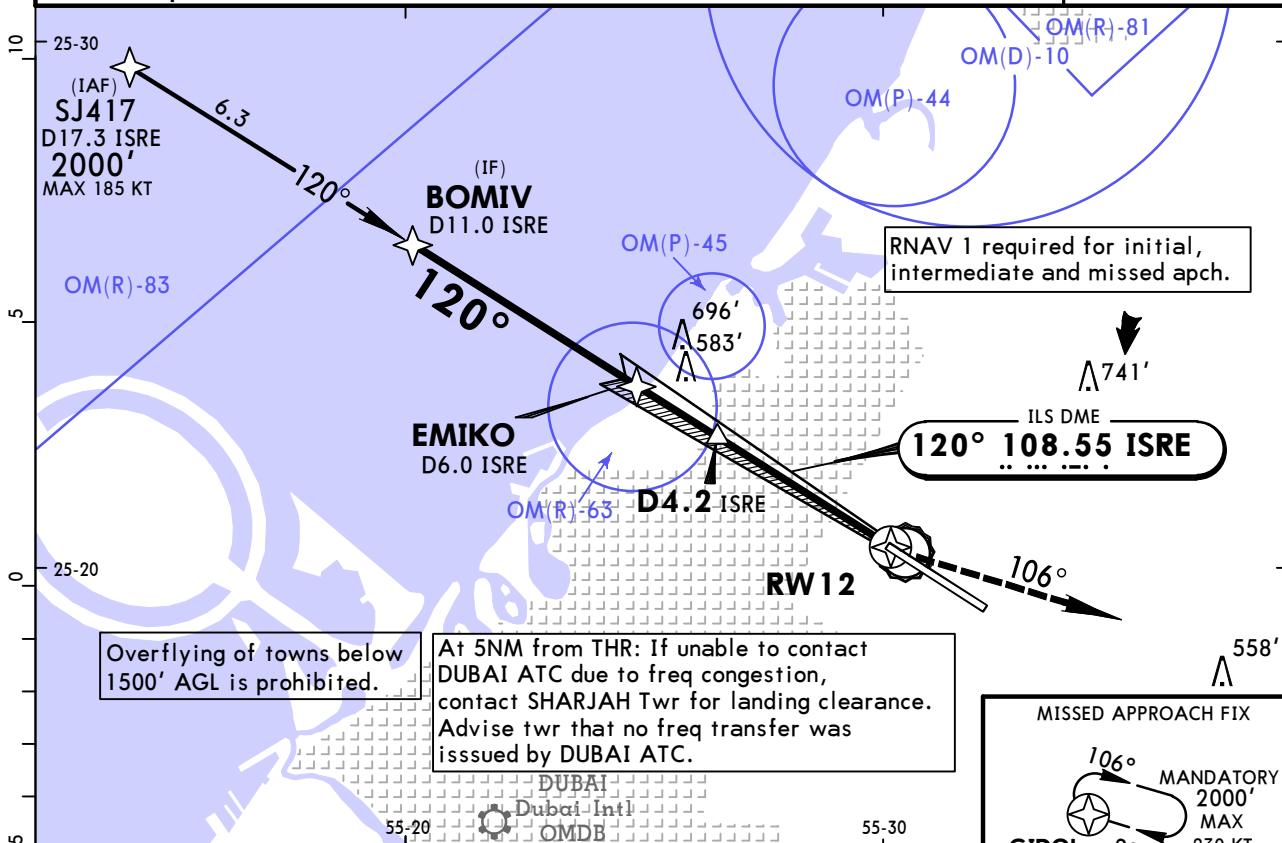
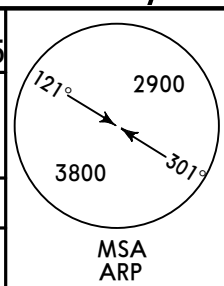
HOT SPOTS
 HS01
 See 10-9A for description of Hot spots.

OMSJ/SHJ SHARJAH INTL

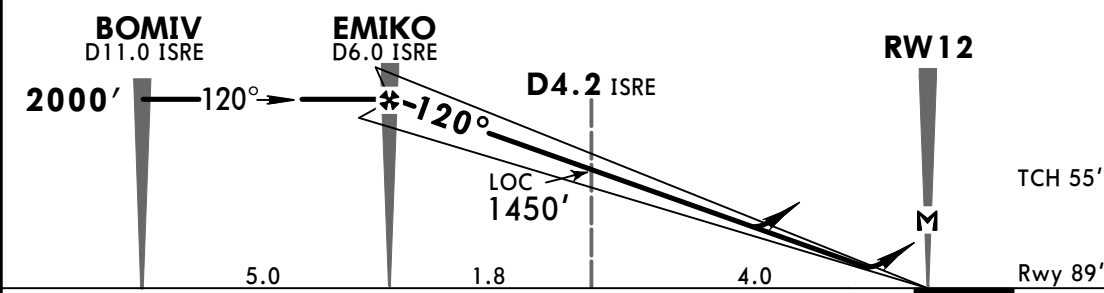
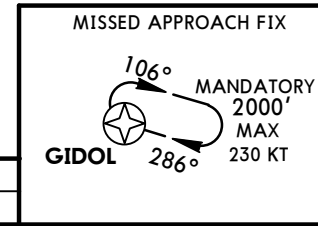
JEPPESEN
1 DEC 17 **(11-1) Eff 7 Dec**

SHARJAH, UAE ILS Rwy 12

ATIS 122.4	DUBAI Arrivals North (APP/R) 124.450	DUBAI Arrivals South (APP/R) 124.9	DUBAI Director (APP/R) 127.9X	SHARJAH Tower 118.6	Ground 121.875
LOC ISRE 108.55	Final Apch Crs 120°	GS EMIKO 2000' (1911')	ILS DA(H) 289' (200')	Apt Elev 118' Rwy 89'	
MISSED APCH: Climb direct to GIDOL and hold at 2000'.					
Alt Set: hPa		Rwy Elev: 3 hPa	Trans level: FL 150		Trans alt: 13000'
1. DME required. 2. ILS DME reads zero at TDZ.					



LOC	ISRE DME	6.0	5.0	4.0	3.0	2.0	1.0
(GS out)	ALTITUDE	1990'	1670'	1350'	1030'	710'	390'



Gnd speed-Kts	70	90	100	120	140	160	HIALS-II REIL PAPI PAPI 2000' LT GIDOL	
ILS GS or LOC Descent Angle	3.00°	372	478	531	637	743		849
MAP at RWY12								

STRAIGHT-IN LANDING RWY 12			
ILS			LOC (GS out)
DA(H) 289' (200')			CDFA DA/MDA(H) 400' (311')
FULL	TDZ or CL out	ALS out	ALS out

PANS OPS	A					
	B					
	C	RVR 550m	RVR 550m I	RVR 1200m	RVR 750m	RVR 1400m
	D					

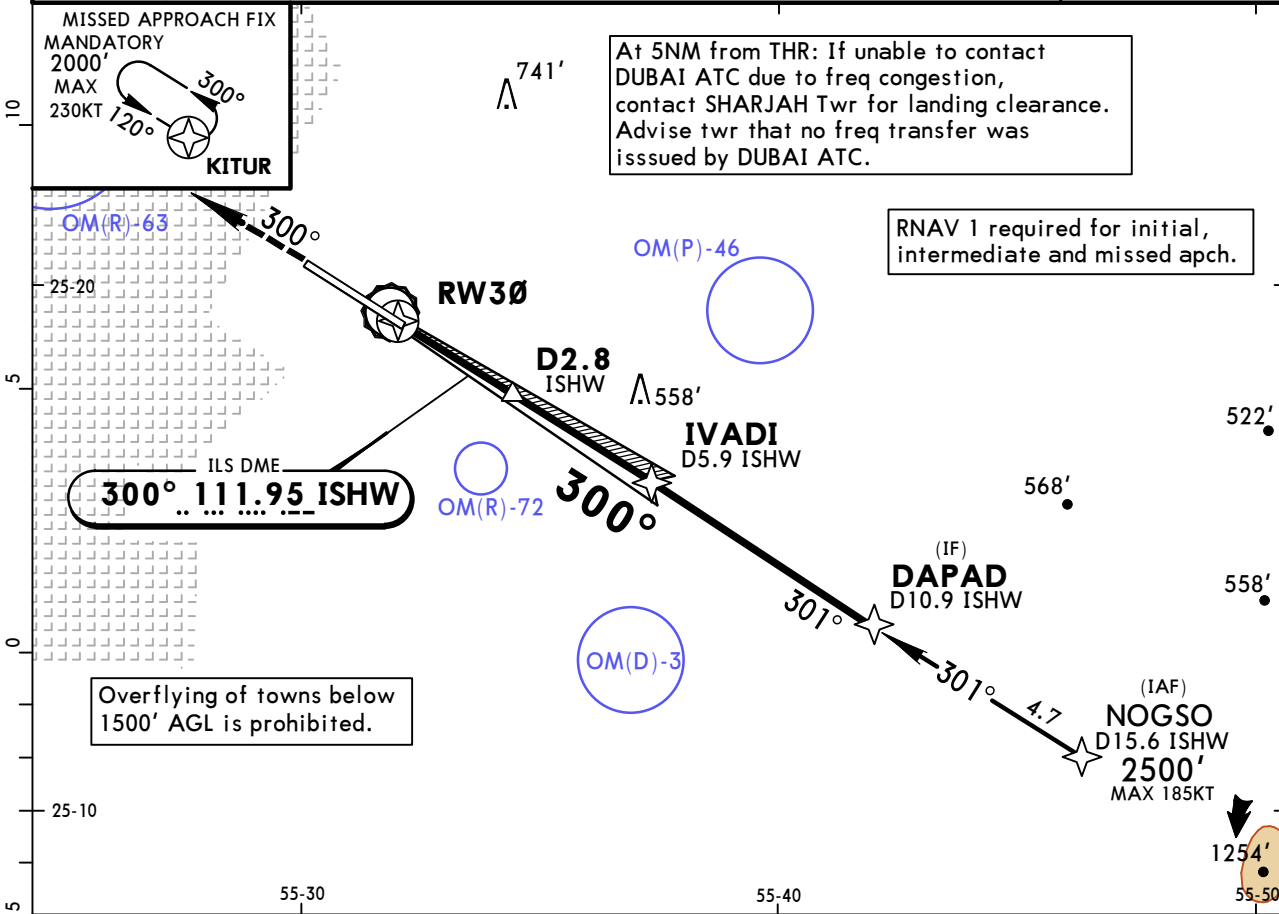
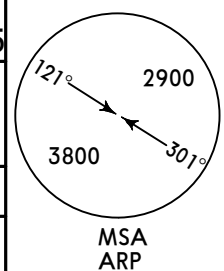
I W/o HUD/AP/FD: RVR 750m

OMSJ/SHJ SHARJAH INTL

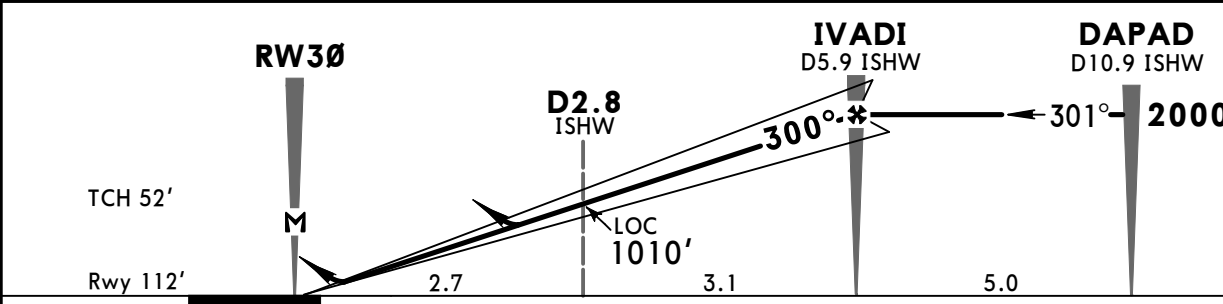
JEPPESSEN
1 DEC 17 **(11-2)** Eff 7 Dec

SHARJAH, UAE
ILS Rwy 30

ATIS 122.4	DUBAI Arrivals North (APP/R) 124.450	DUBAI Arrivals South (APP/R) 124.9	DUBAI Director (APP/R) 127.9X	SHARJAH Tower 118.6	Ground 121.875
LOC ISHW 111.95	Final Apch Crs 300°	GS IVADI 2000' (1888')	ILS DA(H) 312' (200')	Apt Elev 118' Rwy 112'	
MISSED APCH: Climb direct to KITUR and hold at 2000'.					
Alt Set: hPa		Rwy Elev: 4 hPa		Trans level: FL 150	
1. DME required.		2. ILS DME reads zero at TDZ.		Trans alt: 13000'	



LOC (GS out)	ISHW DME	0.9	1.9	2.9	3.9	4.9	5.9
	ALTITUDE	400'	710'	1020'	1340'	1650'	1970'



Gnd speed-Kts	70	90	100	120	140	160	HIALS-II REIL PAPI PAPI 2000' KITUR	
ILS GS or LOC Descent Angle	3.00°	372	478	531	637	743		849
MAP at RW30								

PANS OPS	ILS STRAIGHT-IN LANDING RWY 30			LOC (GS out) CDFA	
	DA(H) 312' (200')			DA/MDA(H) 460' (348')	
	FULL	TDZ or CL out	ALS out	ALS out	
	A			RVR 1500m	
B			RVR 1600m		
C	RVR 550m	RVR 550m I	RVR 1200m	RVR 900m	
D				RVR 1600m	

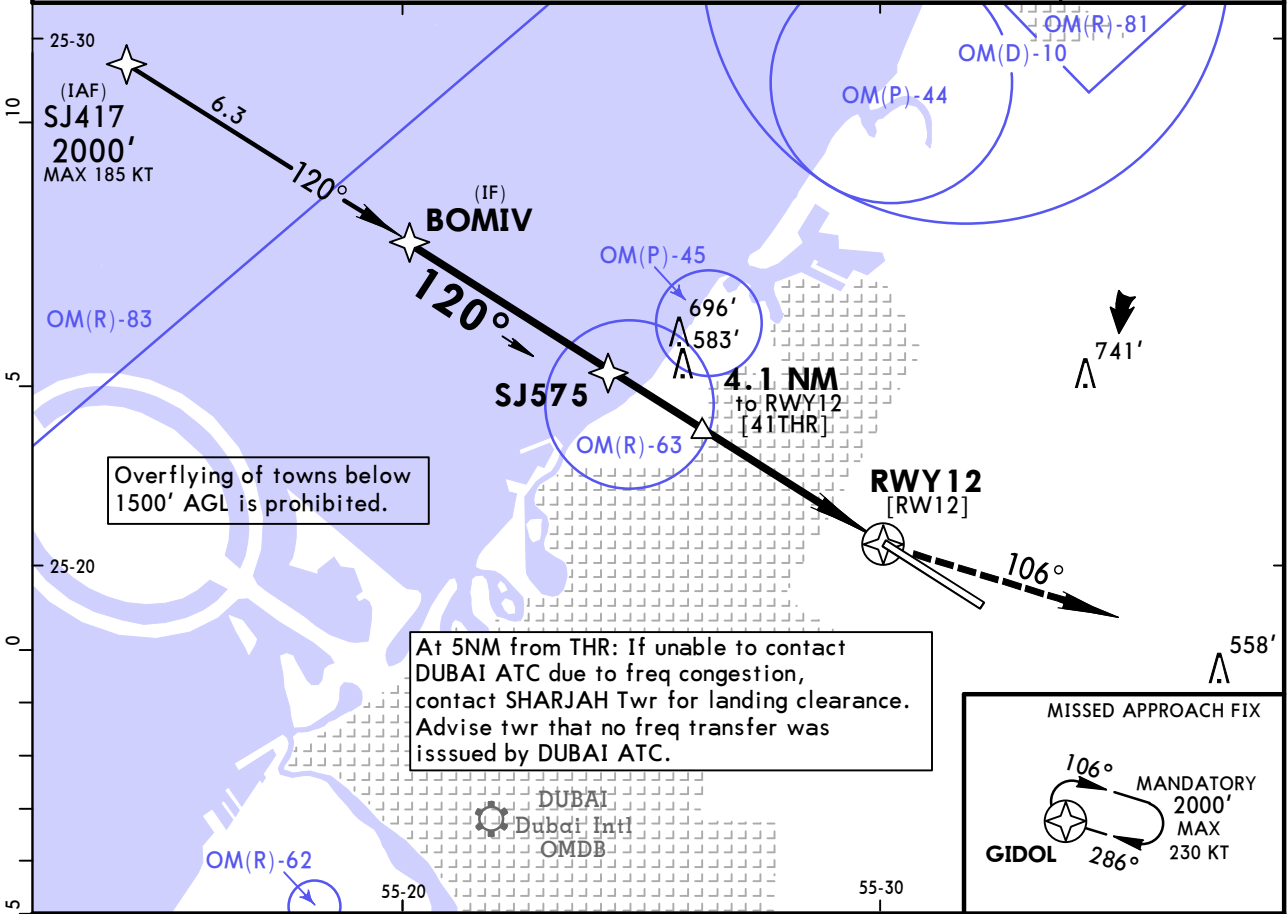
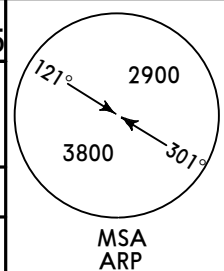
I W/o HUD/AP/FD: RVR 750m

OMSJ/SHJ SHARJAH INTL

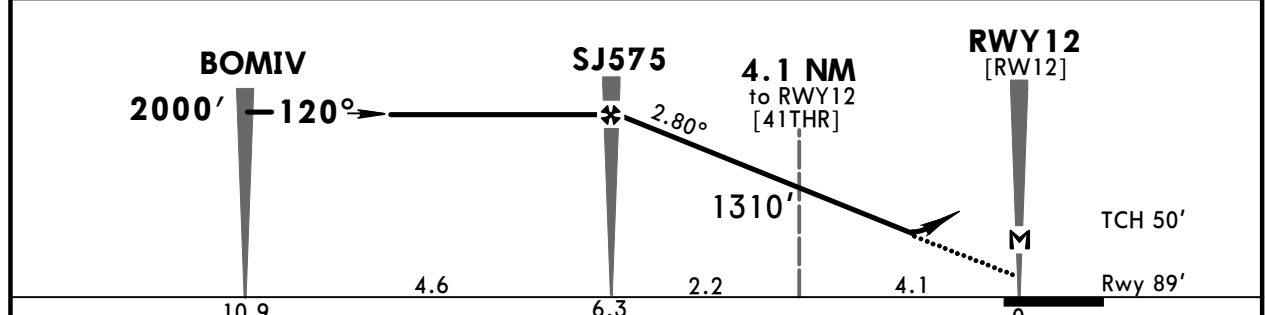
JEPPESEN
1 DEC 17
Eff 7 Dec (12-1)

SHARJAH, UAE RNAV (GNSS) Z Rwy 12

ATIS 122.4	DUBAI Arrivals North (APP/R) 124.450	DUBAI Arrivals South (APP/R) 124.9	DUBAI Director (APP/R) 127.9X	SHARJAH Tower 118.6	Ground 121.875
RNAV	Final Apch Crs 120°	Minimum Alt SJ575 2000' (1911')	LNAV/VNAV DA(H) Refer to Minimums	Apt Elev 118' Rwy 89'	
MISSED APCH: Climb direct to GIDOL and hold at 2000'.					
Alt Set: hPa		Rwy Elev: 3 hPa	Trans level: FL 150	Trans alt: 13000'	
Baro-VNAV operations not authorized below 10° C.					



DIST to RWY12	6.2	5.2	4.2	3.2	2.2	1.2	0.2
ALTITUDE	1980'	1680'	1380'	1090'	790'	490'	190'



Gnd speed-Kts	70	90	100	120	140	160	
Descent Angle	2.80°	347	446	495	594	792	
LNAV/VNAV MAP at DA							
LNAV MAP at RWY12							

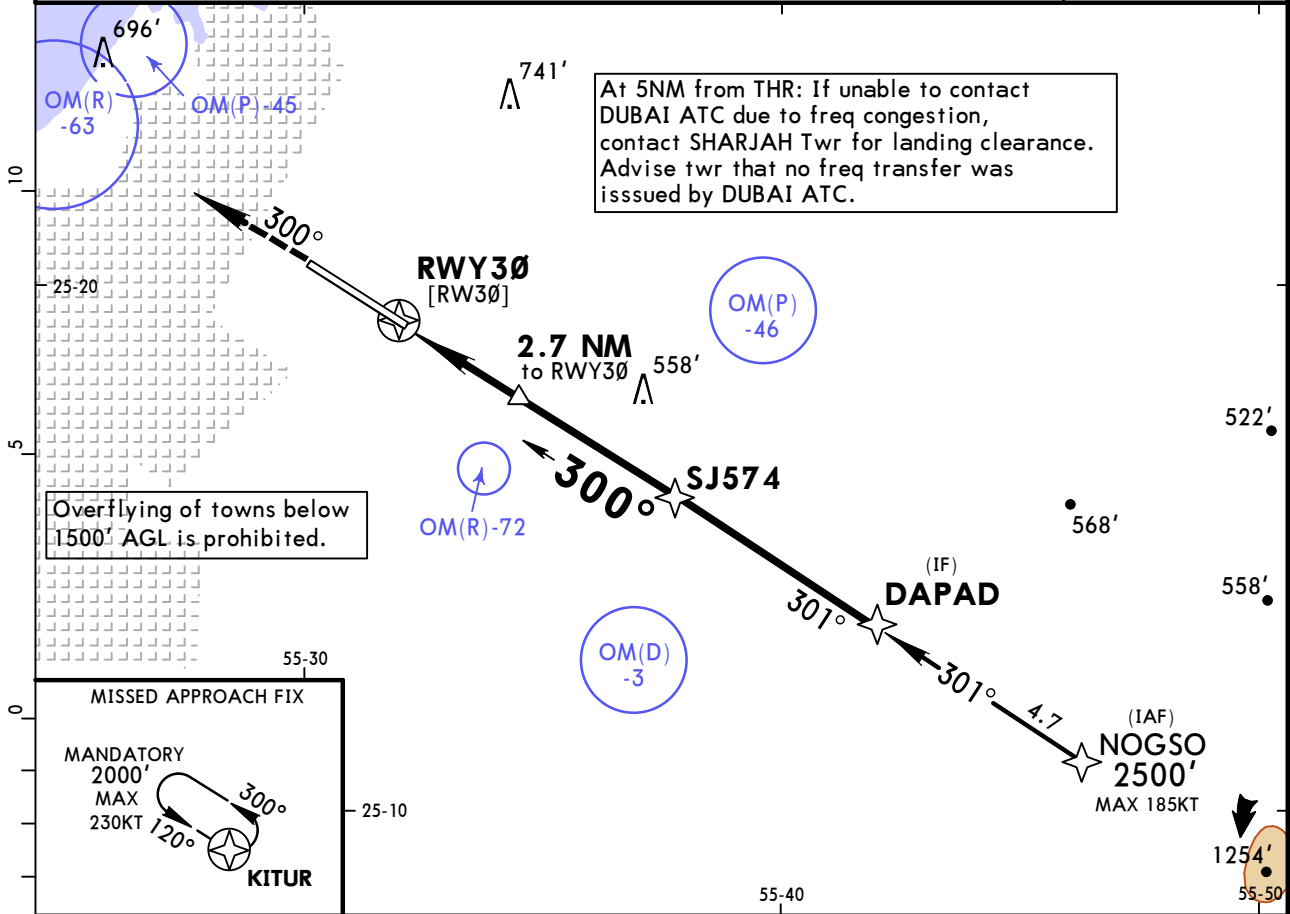
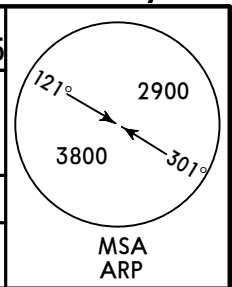
Standard				STRAIGHT-IN LANDING RWY 12			
LNAV/VNAV				LNAV CDFA			
DA(H) ABC: 339' (250') D: 343' (254')				DA/MDA(H) 460' (371')			
ALS out				ALS out			
A							RVR 1500m
B							RVR 1500m
C	RVR 750m ■	RVR 1300m		RVR 1000m		RVR 1700m	
D							RVR 1700m

OMSJ/SHJ SHARJAH INTL

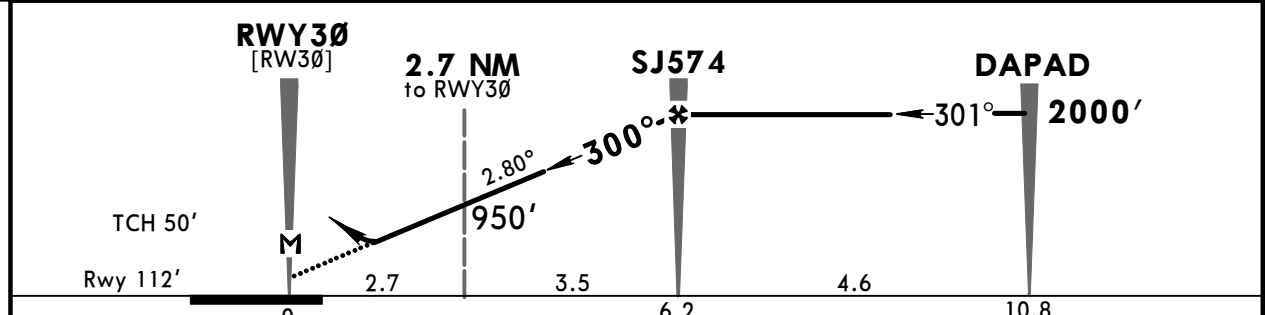
JEPPESEN
1 DEC 17
Eff 7 Dec 12-2

SHARJAH, UAE RNAV (GNSS) Z Rwy 30

ATIS 122.4	DUBAI Arrivals North (APP/R) 124.450	DUBAI Arrivals South (APP/R) 124.9	DUBAI Director (APP/R) 127.9X	SHARJAH Tower 118.6	Ground 121.875
RNAV	Final Apch Crs 300°	Minimum Alt SJ574 2000' (1888')	LNAV/VNAV DA(H) Refer to Minimums	Apt Elev 118' Rwy 112'	
MISSED APCH: Climb direct to KITUR and hold at 2000'.					
Alt Set: hPa		Rwy Elev: 4 hPa		Trans level: FL 150	
Baro-VNAV operations not authorized below 10° C.			Trans alt: 13000'		



DIST to RWY30	1.1	2.1	3.1	4.1	5.1	6.1
ALTITUDE	480'	780'	1080'	1380'	1670'	1970'



Gnd speed-Kts	70	90	100	120	140	160	HIALS-II REIL PAPI PAPI	2000'	D	KITUR
Descent Angle	2.80°	347	446	495	594	792				
LNAV/VNAV MAP at DA										
LNAV MAP at RWY30										

Standard		STRAIGHT-IN LANDING RWY 30		LNAV CDFA	
LNAV/VNAV		A: 366' (254') C: 387' (275')		DA/MDA(H) 490' (378')	
DA(H) B: 379' (267') D: 397' (285')		ALS out		ALS out	
A					RVR 1500m
B		RVR 1300m			
C	RVR 750m ■		RVR 1000m		RVR 1700m
D		RVR 1400m			

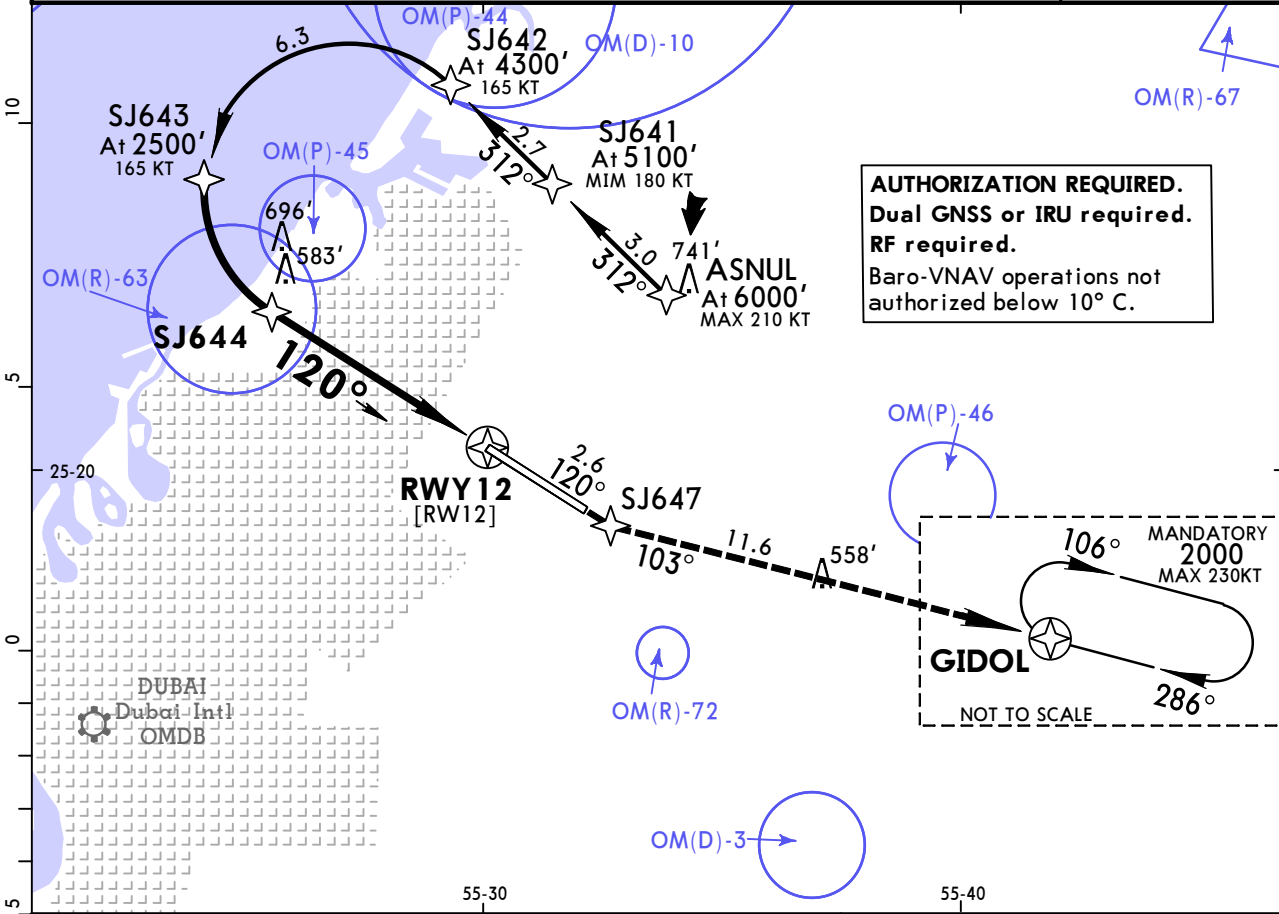
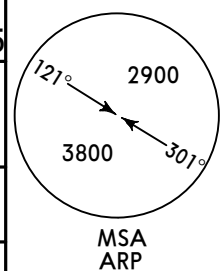
■ With TDZ & CL & HUD: CAT ABC RVR 600m, CAT D RVR 650m.

OMSJ/SHJ SHARJAH INTL

JEPPESEN
1 DEC 17
Eff 7 Dec (12-21)

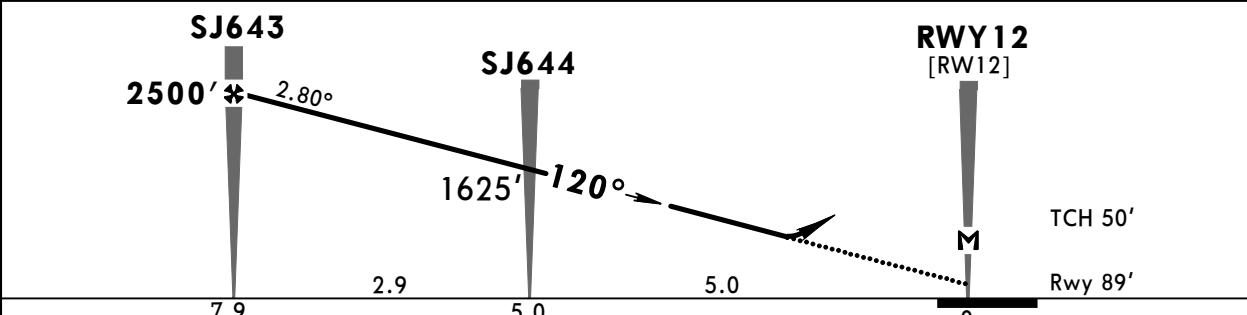
SHARJAH, UAE RNAV (RNP) Y Rwy 12

ATIS 122.4	DUBAI Arrivals North (APP/R) 124.450	DUBAI Arrivals South (APP/R) 124.9	DUBAI Director (APP/R) 127.9X	SHARJAH Tower 118.6	Ground 121.875
RNAV	Final Apch Crs 120°	Minimum Alt SJ643 2500' (2411')	RNP 0.30 DA(H) Refer to Minimums	Apt Elev 118' Rwy 89'	
MISSED APCH: Climb direct to SJ647, then turn LEFT on 103° to GIDOL and hold at 2000'.					
Alt Set: hPa		Rwy Elev: 3 hPa	Trans level: FL 150		Trans alt: 13000'



AUTHORIZATION REQUIRED.
Dual GNSS or IRU required.
RF required.
Baro-VNAV operations not authorized below 10° C.

DIST to RWY12	7.5	6.5	5.5	4.5	3.5	2.5	1.5	0.5
ALTITUDE	2360'	2070'	1770'	1470'	1180'	880'	580'	290'



Gnd speed-Kts	70	90	100	120	140	160	HIALS-II REIL PAPI PAPI	SJ647 ↑
Descent Angle	2.80°	347	446	495	594	792		

Standard		STRAIGHT-IN LANDING RWY 12			
		RNP 0.30 CDFA			
DA(H)		A: 402' (313')	B: 423' (334')	C: 441' (352')	D: 460' (371')
		ALS out			
A	RVR 750m	RVR 1400m			
B	RVR 800m	RVR 1500m			
C	RVR 900m	RVR 1600m			
D	RVR 1000m	RVR 1700m			

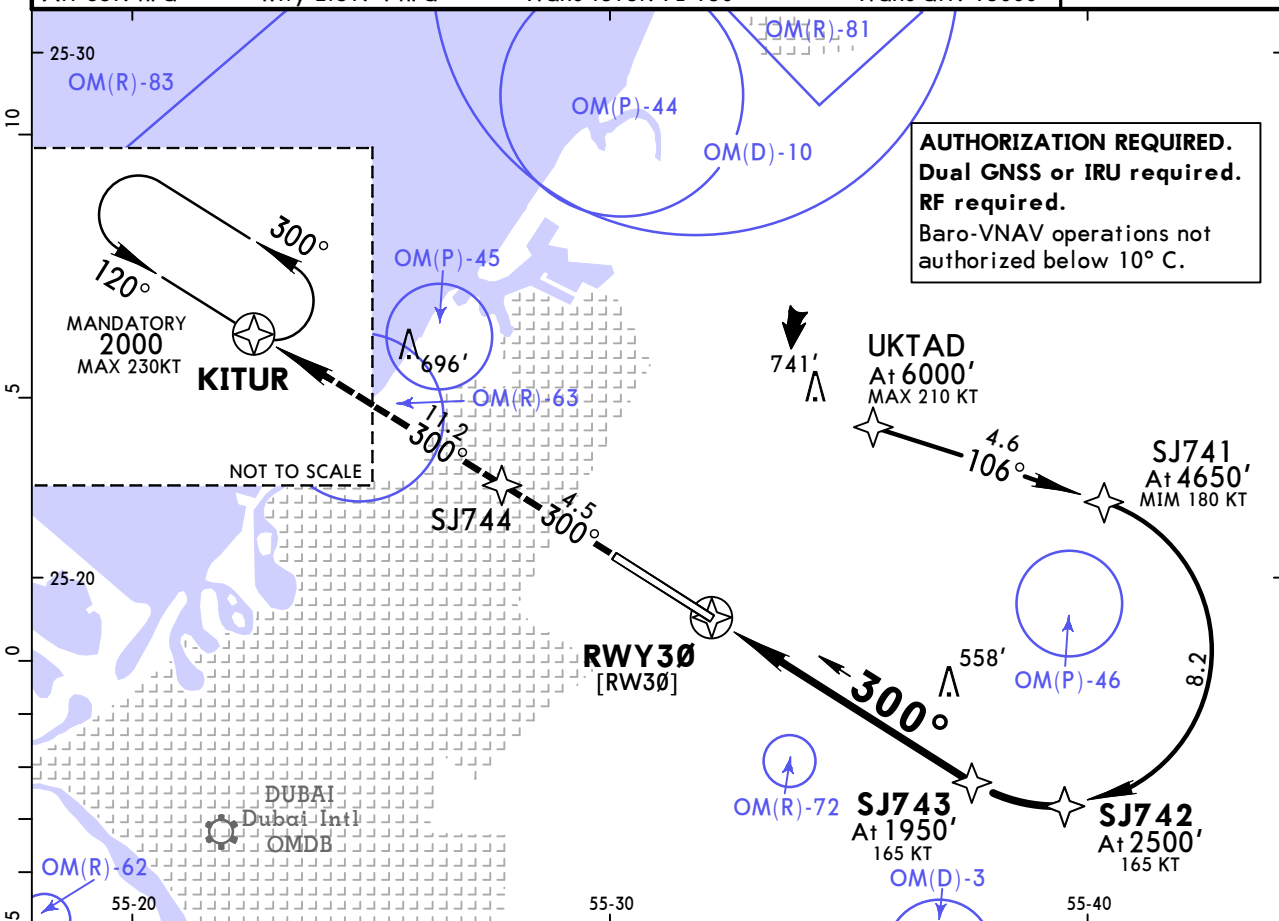
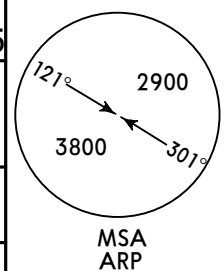
With TDZ & CL & HUD: RVR 700m.

OMSJ/SHJ
SHARJAH INTL

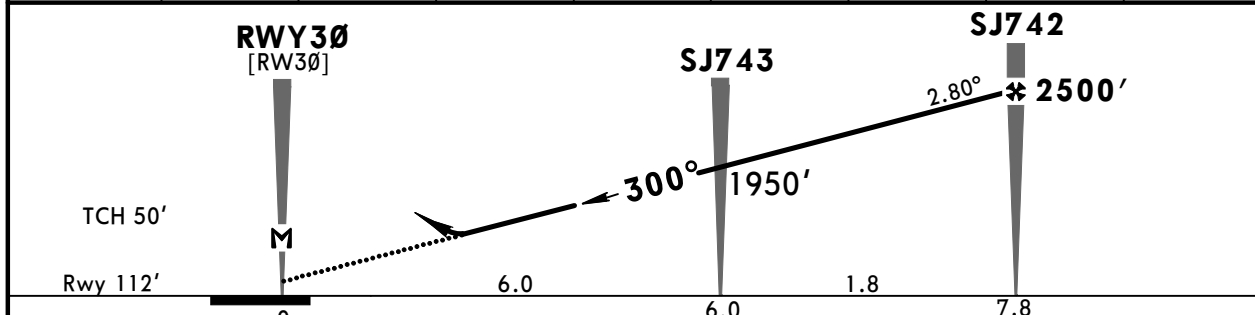
JEPPESSEN
1 DEC 17
Eff 7 Dec 12-22

SHARJAH, UAE
RNAV (RNP) Y Rwy 30

ATIS 122.4	DUBAI Arrivals North (APP/R) 124.450	DUBAI Arrivals South (APP/R) 124.9	DUBAI Director (APP/R) 127.9X	SHARJAH Tower 118.6	Ground 121.875
RNAV	Final Apch Crs 300°	Procedure Alt SJ742 2500' (2388')	RNP 0.30 DA(H) Refer to Minimums	Apt Elev 118' Rwy 112'	
MISSED APCH: Climb to 1500' direct to SJ744, then to KITUR and hold at 2000'.					
Alt Set: hPa		Rwy Elev: 4 hPa	Trans level: FL 150		Trans alt: 13000'



DIST to RWY30	0.7	1.7	2.7	3.7	4.7	5.7	6.7	7.7
ALTITUDE	370'	660'	960'	1260'	1560'	1860'	2160'	2450'



Gnd speed-Kts	70	90	100	120	140	160	HIALS-II REIL PAPI PAPI 1500' SJ744
Descent Angle	2.80°	347	446	495	594	792	

Standard STRAIGHT-IN LANDING RWY 30
RNP 0.30
CDFA
DA(H) A: **393'** (281') B: **405'** (293') C: **413'** (301') D: **424'** (312')
ALS out

A	RVR 750m I	RVR 1400m
B		
C		
D		

I With TDZ & CL & HUD: CAT AB RVR 650m, CAT CD RVR 700m.

Chart changes since cycle 01-2019

ADD = added chart, REV = revised chart, DEL = deleted chart.

ACT	PROCEDURE IDENT	INDEX	REV DATE	EFF DATE
SHARJAH, (SHARJAH INTL - OMSJ)				
REV	AIRPORT BRIEFING (GEN)	10-1P	25 Jan 2019	31 Jan 2019
REV	AIRPORT BRIEFING (ARR, DE...	10-1P1	25 Jan 2019	31 Jan 2019

TERMINAL CHART CHANGE NOTICES

No Chart Change Notices for Airport OMSJ